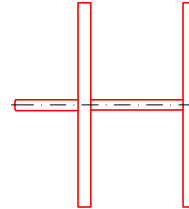
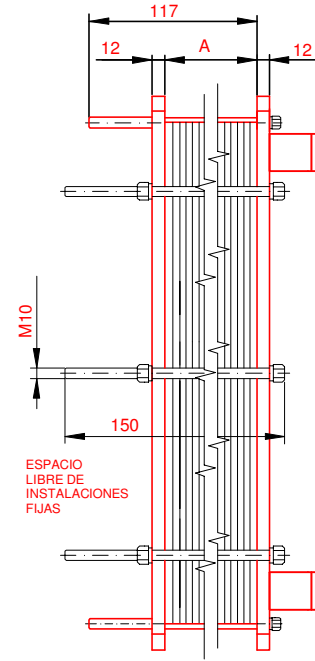
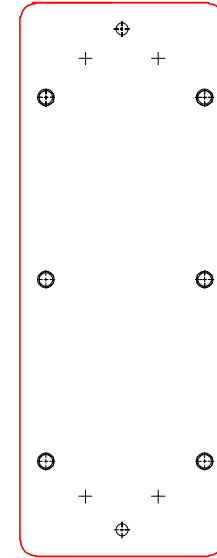
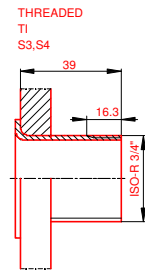
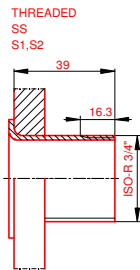
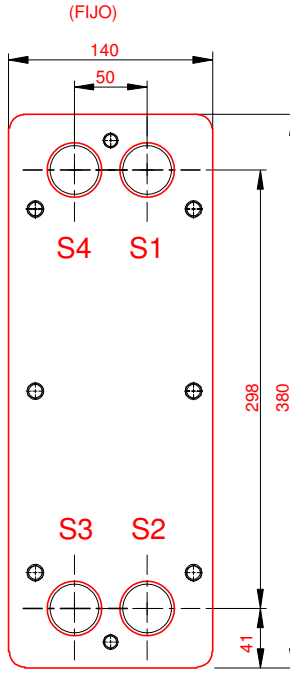


PLACA PRESION
(MOVIBLE)
SECTION A-A



PLACA DE BASTIDOR



NOTAS:

LADO 1	LADO 2	JUNTA	NBRP Clip-on
6,5 bar	6,5 bar	MAT. DE PLACAS	TI
55 °C	5 bar	ESPESOR PLACAS	0,50 mm
0 °C	35 °C		
0 °C	0 °C		

PESO CON AGUA 17 kg

CAPACIDAD CALORIFICA 20 kW

DIMENSIONES EN MILÍMETROS

Do not use this drawing for foundation bolting or piping layout.

LARGO	165
ANCHO	140
ALTO	380

LADO	FLUIDO	F.D.G.	ENTRADA	TEMP.	SALIDA	TEMP.	CAUDAL	PERDIDA-CARGA
1	30.0% Prop.glycol		S1	55.0 °C	S2	45.0 °C	1.8 m³/h	27.34 kPa
2	Water		S3	15.0 °C	S4	32.0 °C	1.0 m³/h	12.23 kPa

ORDEN INTERNA	CANERIA	DIBUJO
		20 kW
AGENTE / REF.		
CLIENTE / REF.		
REALIZADO	CAT. RIESGO	N/A

INTERCAMBIADOR DE CALOR DE PLACAS

T2-BFG

ALS

PISCI Solar 55-45°C HVAC TI

FECHA 2016-09-28

REV. 0