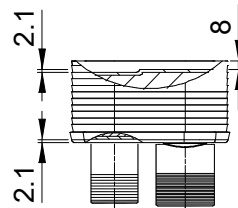
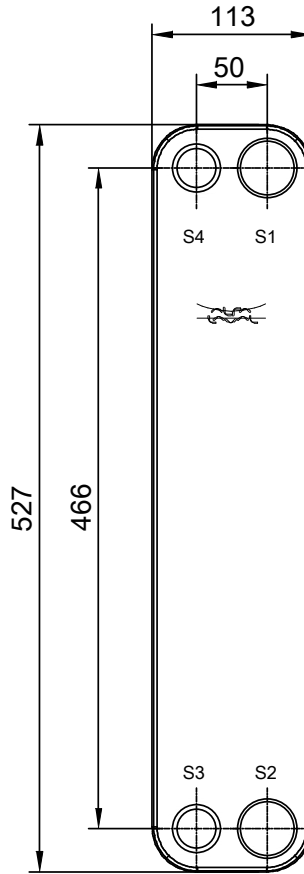
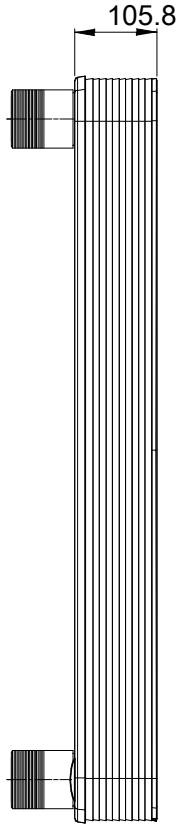
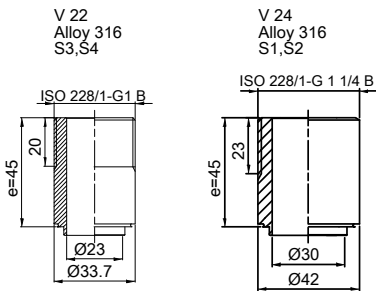


Note that all unique customer requirements (i.e tolerance) need to be verified thru Alfa Laval.



Frameplate is depressed 2.1 mm at connections S3 and S4 if holed.  
Pressureplate is depressed 2.1 mm at connections T3 and T4 if holed.

T1 T2 T3 T4 locations on back side correspond to S1 S2 S3 S4 on front side



HEATING SURFACE  
NETWEIGHT 10.3 kg  
OPERATING WEIGHT  
PLATE MATERIAL Alloy 316  
PLATE GROUPING 1\*19H/1\*20H

ALL DIMENSIONS IN MILLIMETERS

SIDE	MEDIA	INLET	TEMP.	OUTLET	TEMP.	FLOW RATE	PRESSURE DROP	LIQUID VOL.
1								1.96 dm <sup>3</sup>
2								2.06 dm <sup>3</sup>

PRESSURE VESSEL APPROVAL

PED

CB60AQ-40H (3287167800)

www.alfalaval.com

CUSTOMER NAME / REF. NO.

TOTAL LENGTH 150.8 mm  
TOTAL WIDTH 113.0 mm  
TOTAL HEIGHT 527.0 mm

COMPANY / REF.



5/12/2017  
REV 0