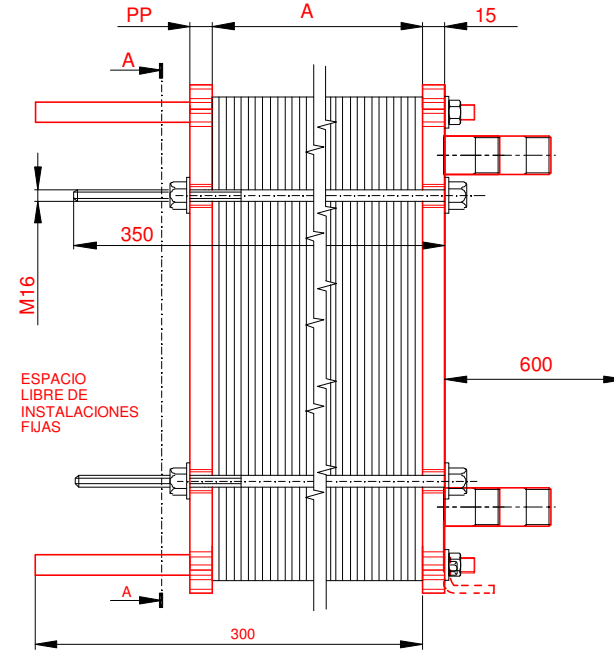
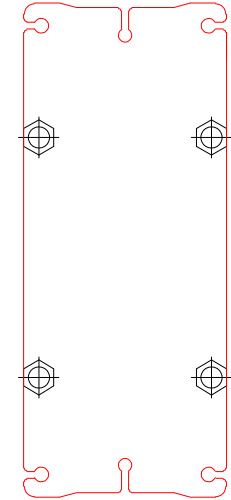
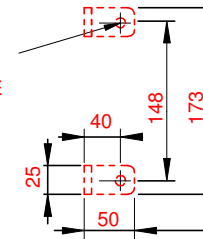


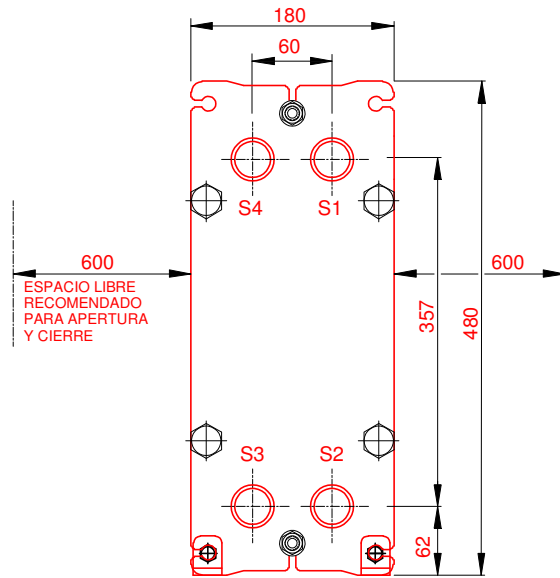
**PLACA PRESION**  
(MOVIBLE)  
SECTION A-A  
PP=15



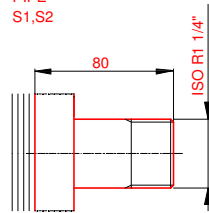
2HOLES D11 FORM10  
PERNOS DE ANCLAJE



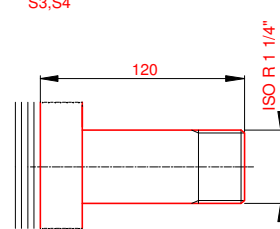
**PLACA DE BASTIDOR**  
(FIJO)



SS  
PIPE  
S1,S2



SS  
PIPE  
S3,S4



NOTAS:  
PRESION PRUEBA 6.5 bar  
PRESION DISEÑO 5 bar  
TEMP. MAXIMA 85 °C  
TEMP. MIN. 0 °C

LADO 1 LADO 2  
LADO 1 LADO 2  
JUNTA NBRB Clip-on  
MAT. DE PLACAS ALLOY 316  
ESPESOR PLACAS 0.50 mm

PESO CON AGUA 38 kg  
CAPACIDAD CALORIFICA 250 kW

DIMENSIONES EN MILÍMETROS

Do not use this drawing for foundation bolting or piping layout.

LARGO 405  
ANCHO 180  
ALTO 480

LADO	FLUIDO	F.D.G.	ENTRADA	TEMP.	SALIDA	TEMP.	CAUDAL	PERDIDA-CARGA
1	Water	2	S1	85.0 °C	S2	65.0 °C	11.1 m³/h	46.15 kPa
2	Water	2	S3	50.0 °C	S4	70.0 °C	10.9 m³/h	46.50 kPa

ORDEN INTERNA	CANERIA	DIBUJO
		250 kW
AGENTE / REF.		
CLIENTE / REF.		
REALIZADO	CAT. RIESGO	
	0	

INTERCAMBIADOR DE CALOR DE PLACAS

# M3-FG

PED

RAD caldera 85-65°C HVAC

FECHA 2016-09-28

REV. 0