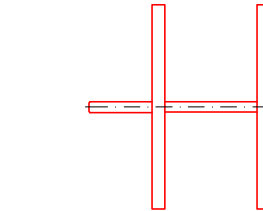
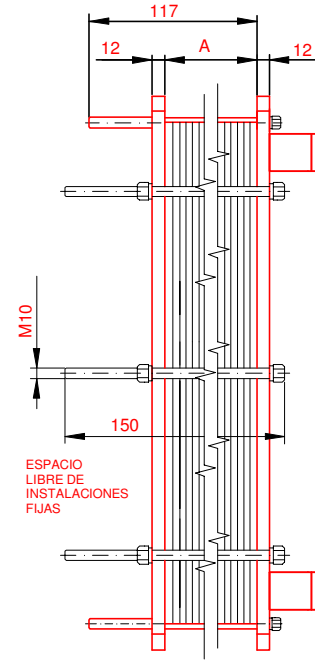
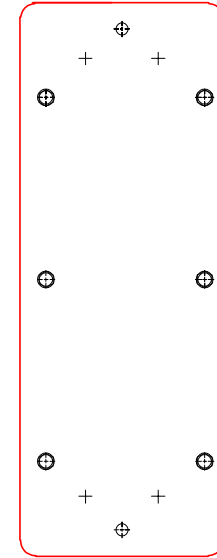
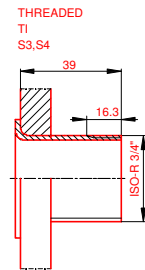
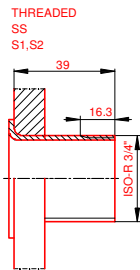
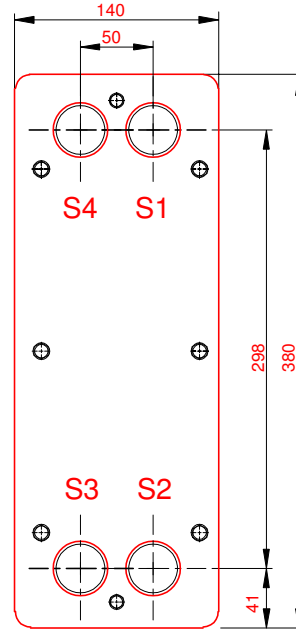


**PLACA PRESION**  
(MOVIBLE)  
SECTION A-A



**PLACA DE BASTIDOR**  
(FIJO)



NOTAS:  
 LADO 1 LADO 2  
 PRESION PRUEBA 6,5 bar 6,5 bar  
 PRESIÓN DISEÑO 5 bar 5 bar  
 TEMP. MAXIMA 80 °C 35 °C  
 TEMP. MIN. 0 °C 0 °C

JUNTA NBRP Clip-on  
 MAT. DE PLACAS TI  
 ESPESOR PLACAS 0,50 mm

PESO CON AGUA 17 kg  
 CAPACIDAD CALORIFICA 40 kW

DIMENSIONES EN MILÍMETROS


Do not use this drawing for foundation bolting or piping layout.

LARGO 165  
 ANCHO 140  
 ALTO 380

LADO	FLUIDO	F.D.G.	ENTRADA	TEMP.	SALIDA	TEMP.	CAUDAL	PERDIDA-CARGA
1	Water		S1	80.0 °C	S2	60.0 °C	1.8 m³/h	45.33 kPa
2	Water		S3	15.0 °C	S4	32.0 °C	2.0 m³/h	44.57 kPa

ORDEN INTERNA	CANERIA	DIBUJO
		40KW
AGENTE / REF.		
CLIENTE / REF.		
REALIZADO	CAT. RIESGO	
	N/A	

INTERCAMBIADOR DE CALOR DE PLACAS  
**ALS T2-BFG**



PISCAL caldera 80-60°C HVAC  
 FECHA 2016-09-28  
 REV. Nº 0