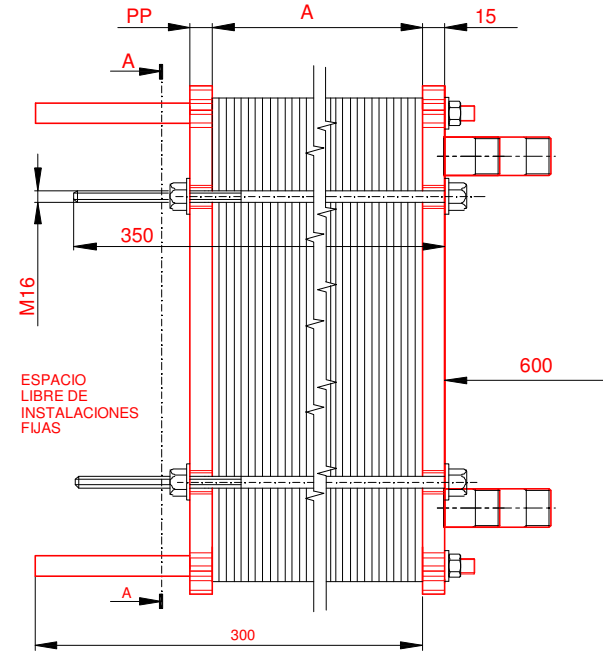
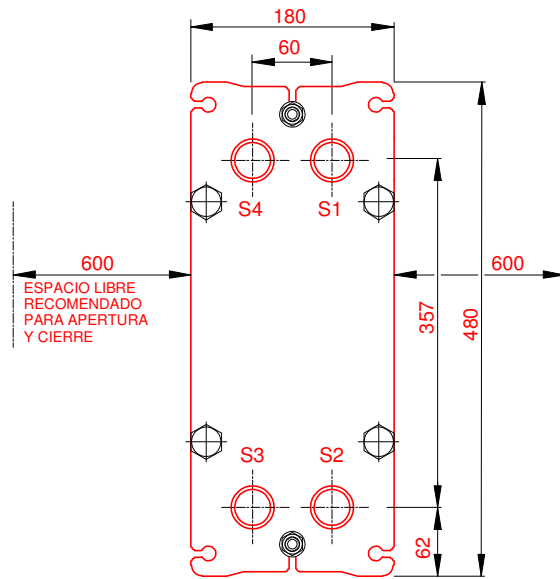


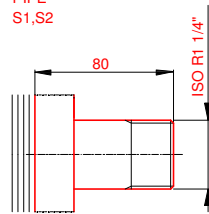
PLACA PRESION
(MOVIBLE)
SECTION A-A
PP=15



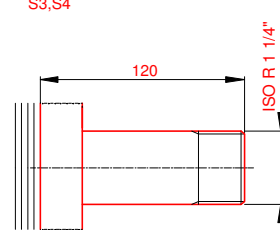
PLACA DE BASTIDOR
(FIJO)



SS
PIPE
S1,S2



SS
PIPE
S3,S4



NOTAS:
LADO 1 LADO 2
PRESION PRUEBA 13 bar 13 bar
PRESION DISEÑO 10 bar 10 bar
TEMP. MAXIMA 90 °C 90 °C
TEMP. MIN. 0 °C 0 °C
PESO CON AGUA 29 kg

JUNTA NBRB Clip-on
MAT. DE PLACAS ALLOY 316
ESPESOR PLACAS 0.50 mm

CAPACIDAD CALORIFICA 200 kW

DIMENSIONES EN MILÍMETROS

Do not use this drawing for foundation bolting or piping layout.

LARGO 405
ANCHO 180
ALTO 480

LADO	FLUIDO	F.D.G.	ENTRADA	TEMP.	SALIDA	TEMP.	CAUDAL	PERDIDA-CARGA
1	Water	2	S1	80.0 °C	S2	60.0 °C	8.9 m³/h	39.94 kPa
2	Water	2	S3	10.0 °C	S4	55.0 °C	3.8 m³/h	9.624 kPa

ORDEN INTERNA	CANERIA	DIBUJO
		200kW
AGENTE / REF.		
CLIENTE / REF.		
REALIZADO	CAT. RIESGO	
	0	


INTERCAMBIADOR DE CALOR DE PLACAS

M3-FG

PED

FECHA 2016-09-28

ACS caldera 80-60°C HVAC



REV. 0