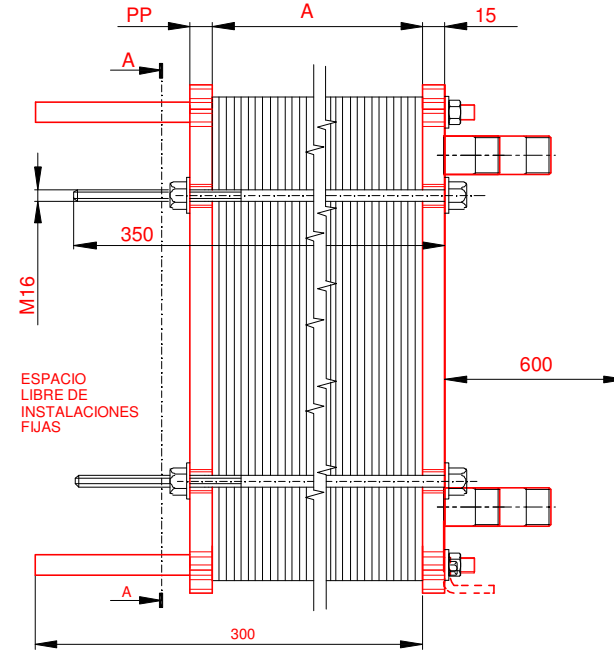
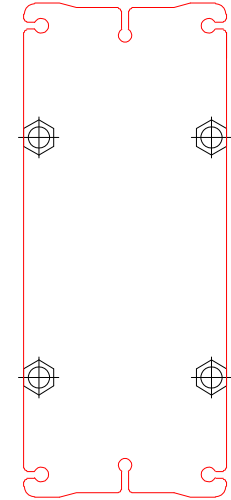
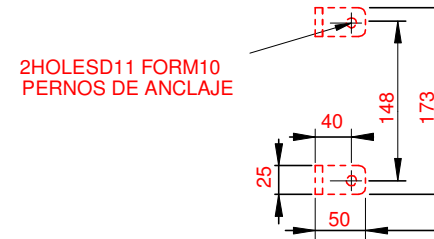
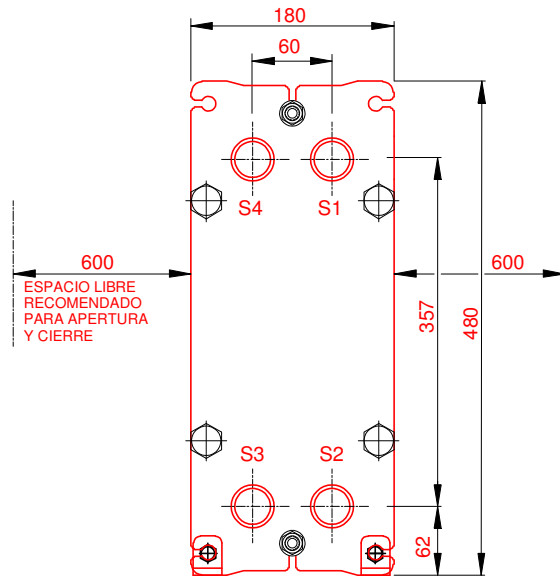


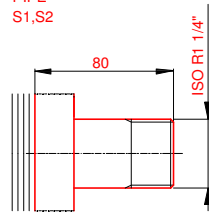
PLACA PRESION
(MOVIBLE)
SECTION A-A
PP=15



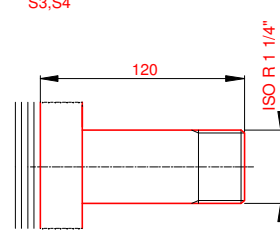
PLACA DE BASTIDOR
(FIJO)



SS PIPE S1,S2



SS PIPE S3,S4



NOTAS:
LADO 1 LADO 2
PRESION PRUEBA 6,5 bar 6,5 bar
PRESION DISEÑO 5 bar 5 bar
TEMP. MAXIMA 85 °C 70 °C
TEMP. MIN. 0 °C 0 °C

JUNTA NBRB Clip-on
MAT. DE PLACAS ALLOY 316
ESPESOR PLACAS 0,50 mm

PESO CON AGUA 34 kg

CAPACIDAD CALORIFICA 200 kW

DIMENSIONES EN MILÍMETROS

Do not use this drawing for foundation bolting or piping layout.

LARGO 405
ANCHO 180
ALTO 480


LADO	FLUIDO	F.D.G.	ENTRADA	TEMP.	SALIDA	TEMP.	CAUDAL	PERDIDA-CARGA
1	Water	2	S1	85.0 °C	S2	65.0 °C	8.9 m³/h	44.54 kPa
2	Water	2	S3	50.0 °C	S4	70.0 °C	8.7 m³/h	41.55 kPa

ORDEN INTERNA	CANERIA	DIBUJO
		200 kW
AGENTE / REF.		
CLIENTE / REF.		
REALIZADO	CAT. RIESGO	
	0	

INTERCAMBIADOR DE CALOR DE PLACAS

M3-FG

PED



RAD caldera 85-65°C HVAC

FECHA 2016-09-28

REV. 0