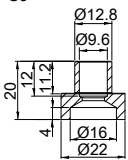
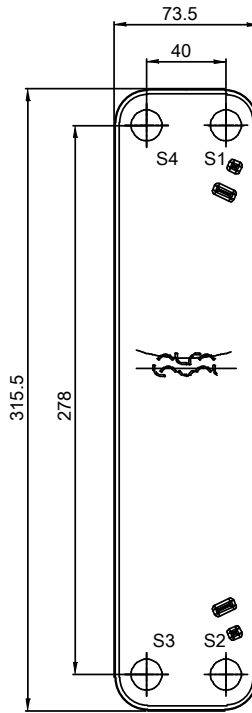
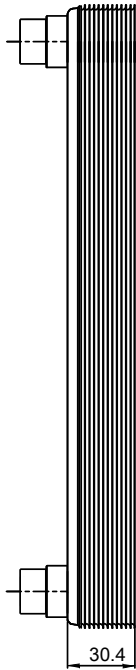
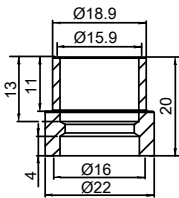


Note that all unique customer requirements (i.e tolerance) need to be verified thru Alfa Laval.

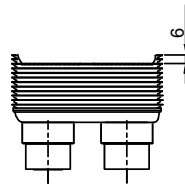
Z74
Alloy 304
S3



Z75
Alloy 304
S1,S2,S4



T1 T2 T3 T4 locations on back side correspond to S1 S2 S3 S4 on front side



HEATING SURFACE
NETWEIGHT 1.27 kg
OPERATING WEIGHT
PLATE MATERIAL Alloy 316
PLATE GROUPING 1*4H/1*5H

ALL DIMENSIONS IN MILLIMETERS

SIDE	MEDIA	INLET	TEMP.	OUTLET	TEMP.	FLOW RATE	PRESSURE DROP	LIQUID VOL.
1								0.15 dm³
2								0.19 dm³

PRESSURE VESSEL APPROVAL

UL/CRN

ACH18-10H R53 (3287130117)

www.alfalaval.com

CUSTOMER NAME / REF. NO.

TOTAL LENGTH 50.4 mm
TOTAL WIDTH 73.5 mm
TOTAL HEIGHT 315.5 mm

COMPANY / REF.

3/15/2017
REV 0