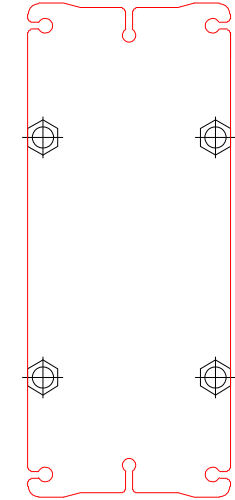
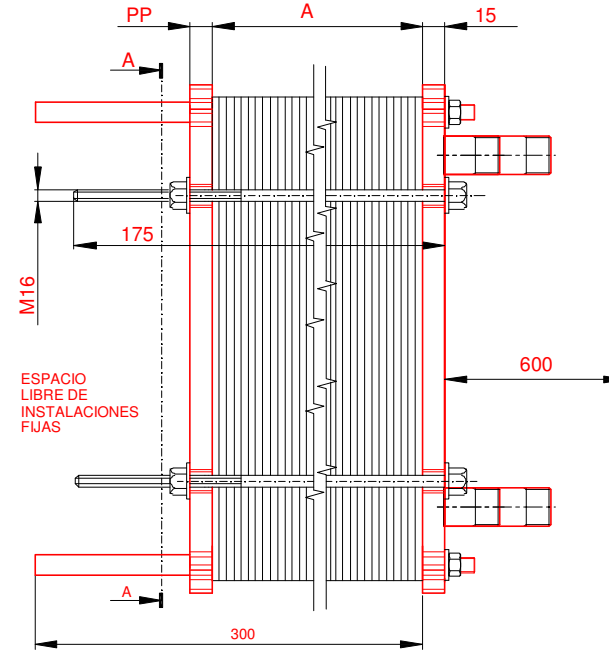
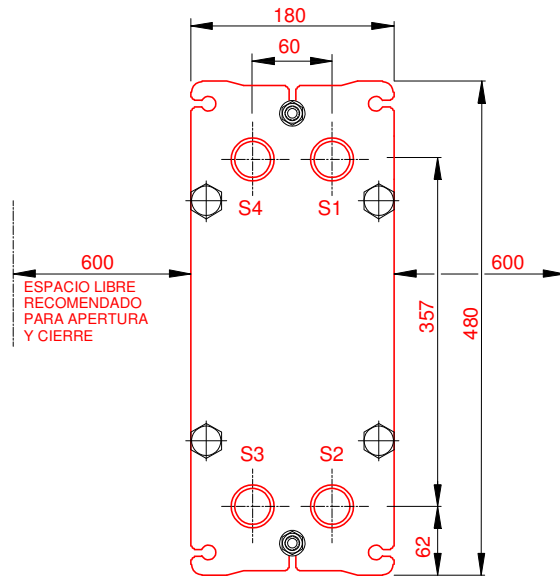


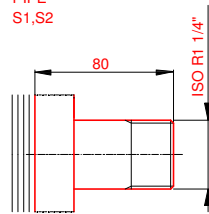
PLACA PRESION
(MOVIBLE)
SECTION A-A
PP=15



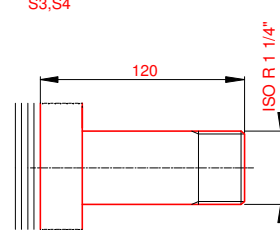
PLACA DE BASTIDOR
(FIJO)



SS
PIPE
S1,S2



SS
PIPE
S3,S4



NOTAS:
LADO 1 LADO 2
PRESION PRUEBA 6,5 bar 6,5 bar
PRESION DISEÑO 5 bar 5 bar
TEMP. MAXIMA 80 °C 35 °C
TEMP. MIN. 0 °C 0 °C
PESO CON AGUA 23 kg

JUNTA NBRB Clip-on
MAT. DE PLACAS ALLOY 316
ESPESOR PLACAS 0.50 mm
CAPACIDAD CALORIFICA 120 kW

DIMENSIONES EN MILÍMETROS

Do not use this drawing for foundation bolting or piping layout.

LARGO 405
ANCHO 180
ALTO 480


LADO	FLUIDO	F.D.G.	ENTRADA	TEMP.	SALIDA	TEMP.	CAUDAL	PERDIDA-CARGA
1	Water	2	S1	80.0 °C	S2	60.0 °C	5.3 m³/h	26.74 kPa
2	Water	2	S3	15.0 °C	S4	32.0 °C	6.1 m³/h	41.02 kPa

ORDEN INTERNA	CANERIA	DIBUJO
		120KW
AGENTE / REF.		
CLIENTE / REF.		
REALIZADO	CAT. RIESGO	
	0	

INTERCAMBIADOR DE CALOR DE PLACAS

M3-FG

PED



PISCAL caldera 80-60°C HVAC

FECHA 2016-09-28

REV. 0