

APPROXIMATE WEIGHTS:

TOTAL WEIGHT OF EMPTY DECANTER	2300kg/ 5071lbs
ROTATING ASSY INCL. PILLOW BLOCKS	600kg/ 1323lbs
CPL.FRAME ASSY EXCL. MAIN MOTOR AND ROT. ASSY..	1400kg/ 3087lbs
MAIN MOTOR INCL. MOTOR PLATE AND PULLEY	300kg/ 662lbs
UPPER CASING	150kg/ 331lbs
GEAR BOX	90kg/ 199lbs
MIN.CRANE CAPACITY FOR LIFTING OF ROTATING ASSY:	1000kg/ 2206lbs

LOADING DATA:

DECANTER

1. MAX. STATIC LOAD

A- VERTICAL	24000N
B- HORIZONTAL	0N

2. MAX. DYNAMIC LOAD AT RUN DOWN
(ADD TO STATIC LOAD)

A- VERTICAL	± 8000N
B- HORIZONTAL	± 4000N

3. MAX. DYNAMIC LOAD AT OPERATING SPEED

A- VERTICAL	± 750N
B- HORIZONTAL	± 750N

ALL LOADS ARE EVENLY DISTRIBUTED ON THE VIBRATION ISOLATORS

CONNECTIONS:

DIMENSION / TYPE

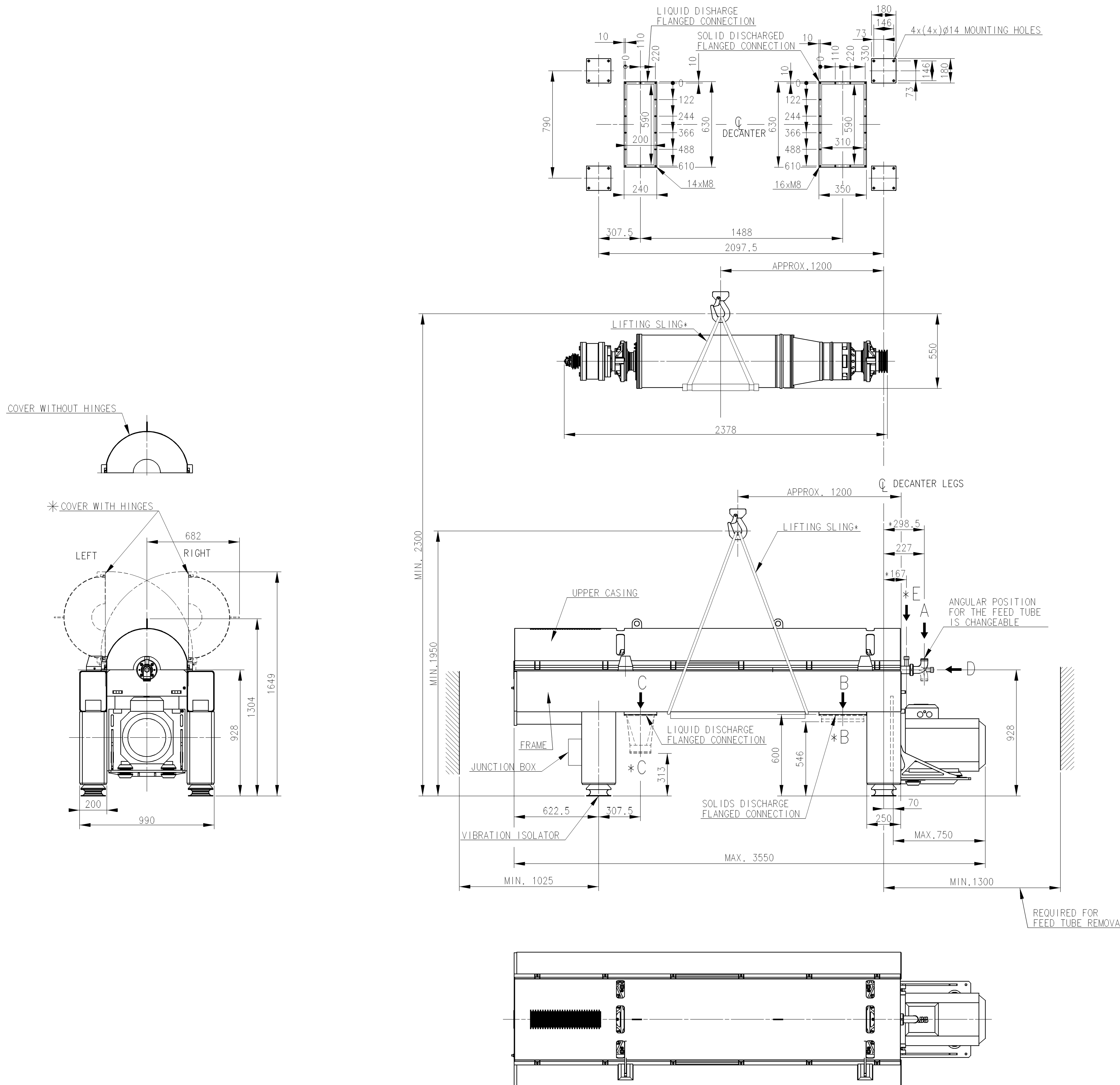
A FEED	ø51 (2*)HOSE CONNECTION
B SOLIDS OUTLET	RECTANGULAR FLANGE
*B SOLIDS OUTLET FUNNEL	590 x 310
*C LIQUID OUTLET	RECTANGULAR FLANGE
C HEAVY PHASE LIQUID OUTLET FUNNEL	ø154 (6)HOSE CONNECTION
D POLYMER ADDITION	ISO 228-G 3/4" B CONNECTION
*E POLYMER ADDITION	ISO 228-G 3/4" B CONNECTION

NOTES:

- ALL CONNECTIONS MUST BE FLEXIBLE.
- FOR PROPER VENTING OF DISCHARGE HOPPERS REFER TO THE INSTALLATION DRAWING. IMPROPER VENTING CAN LEAD TO LEAKAGE PROBLEMS.
- CUSTOMER IS RESPONSIBLE FOR ANCHORING.
- FOR FURTHER INFORMATION, SEE INSTALLATION DATA MANUAL AND INSTALLATION DRAWING

* OPTIONAL EQUIPMENT

COMPLEMENTARY DRAWING 61242383



14xM8 REPLACES 14xM10
16xM8 REPLACES 16xM10
Rev. No. Date Modified By Appr.
2 090611 XWG OAN

2.5kNm GEAR	Item	Article No.	Name/Designation	Material
	DIMENSIONED DRAWING			
	ALDEC 45			
	First angle projection	Surface roughness	Scale	1:10
Format	AO	Drawn	JLG	
Appr.	ETP	Date	080104	
Model	N	Design Code	080104	
Alfa Laval				Document No.
Alfa Laval Copenhagen A/S				61242382
SØBORG DENMARK				

This document and its contents are the exclusive property of Alfa Laval and are not to be reproduced, stored in a retrieval system, or transmitted in any form or by any means, electronic, mechanical, photocopying, recording, or by any information storage and retrieval system, without the prior written permission of Alfa Laval.