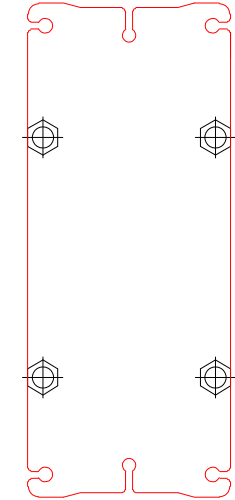
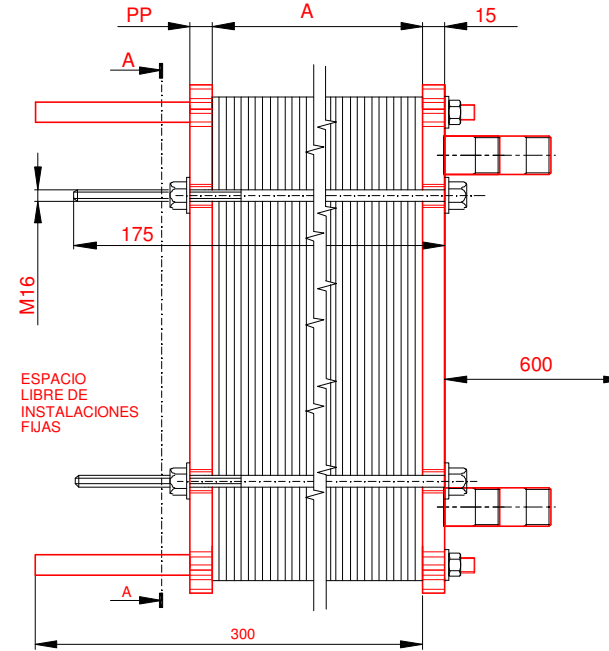
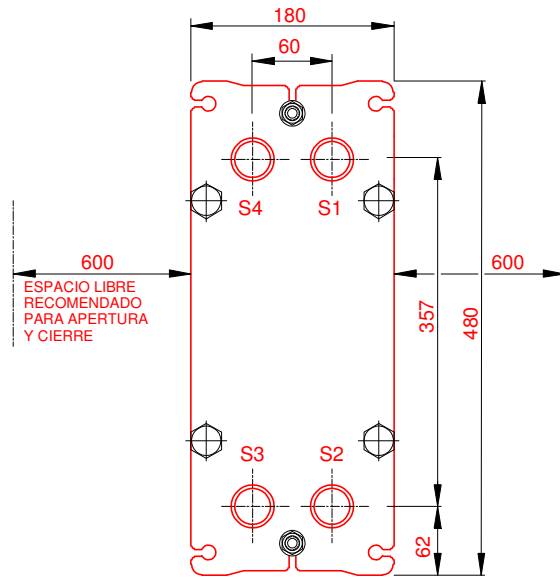


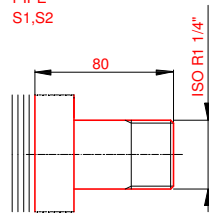
**PLACA PRESION**  
(MOVIBLE)  
SECTION A-A  
PP=15



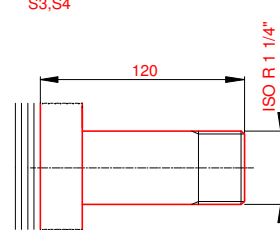
**PLACA DE BASTIDOR**  
(FIJO)



SS  
PIPE  
S1,S2



SS  
PIPE  
S3,S4



NOTAS:  
LADO 1 LADO 2  
PRESION PRUEBA 6,5 bar 6,5 bar  
PRESION DISEÑO 5 bar 5 bar  
TEMP. MAXIMA 85 °C 70 °C  
TEMP. MIN. 0 °C 0 °C

JUNTA NBRB Clip-on  
MAT. DE PLACAS ALLOY 316  
ESPESOR PLACAS 0,50 mm

CAPACIDAD CALORIFICA 80 kW

PESO CON AGUA 25 kg

|                |             |        |
|----------------|-------------|--------|
| ORDEN INTERNA  | CANERIA     | DIBUJO |
|                |             | 80 kW  |
| AGENTE / REF.  |             |        |
| CLIENTE / REF. |             |        |
| REALIZADO      | CAT. RIESGO |        |
|                | 0           |        |

INTERCAMBIADOR DE CALOR DE PLACAS

**M3-FG**  
PED

DIMENSIONES EN MILÍMETROS

Do not use this drawing for foundation bolting or piping layout.

LARGO 405  
ANCHO 180  
ALTO 480

| LADO | FLUIDO | F.D.G. | ENTRADA | TEMP.   | SALIDA | TEMP.   | CAUDAL   | PERDIDA-CARGA |
|------|--------|--------|---------|---------|--------|---------|----------|---------------|
| 1    | Water  | 2      | S1      | 85.0 °C | S2     | 65.0 °C | 3.6 m³/h | 34.69 kPa     |
| 2    | Water  | 2      | S3      | 50.0 °C | S4     | 70.0 °C | 3.5 m³/h | 28.66 kPa     |

FECHA 2016-09-28  
REV. 0  
RAD caldera 85-65°C HVAC

