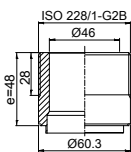
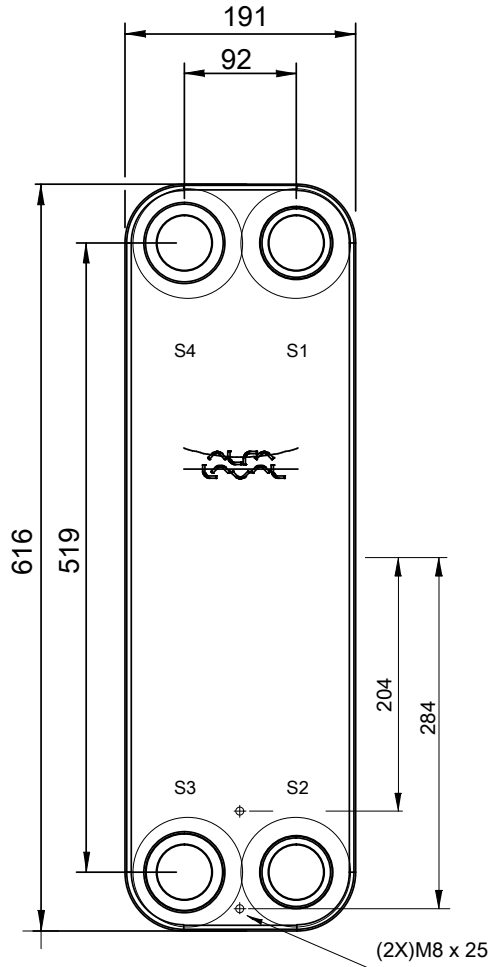
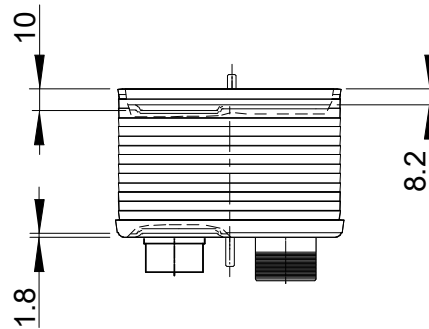
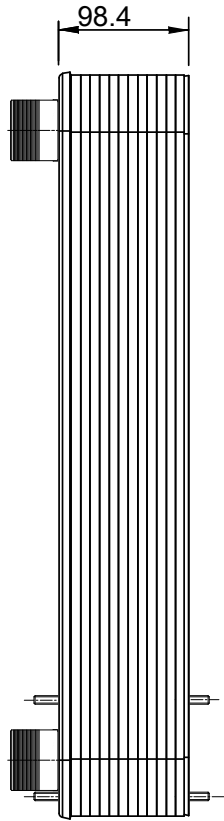
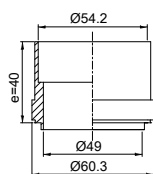


Note that all unique customer requirements (i.e tolerance) need to be verified thru Alfa Laval.

B 23
Alloy 316
S1, S2



D 21
Alloy 316
S3, S4



T1 T2 T3 T4 locations on back side correspond to S1 S2 S3 S4 on front side

HEATING SURFACE
NETWEIGHT 27.5 kg
OPERATING WEIGHT
PLATE MATERIAL Alloy 316
PLATE GROUPING 1*19AHH/1*20AHL

ALL DIMENSIONS IN MILLIMETERS

| SIDE | MEDIA | INLET | TEMP. | OUTLET | TEMP. | FLOW RATE | PRESSURE DROP | LIQUID VOL. |
|------|-------|-------|-------|--------|-------|-----------|---------------|----------------------|
| 1 | | | | | | | | 3.04 dm ³ |
| 2 | | | | | | | | 4 dm ³ |

PRESSURE VESSEL APPROVAL

PED

CB112-40AH (3287118409)

www.alfalaval.com

CUSTOMER NAME / REF. NO.

TOTAL LENGTH 171.4 mm
TOTAL WIDTH 191.0 mm
TOTAL HEIGHT 616.0 mm

COMPANY / REF.



8/24/2017
REV 0