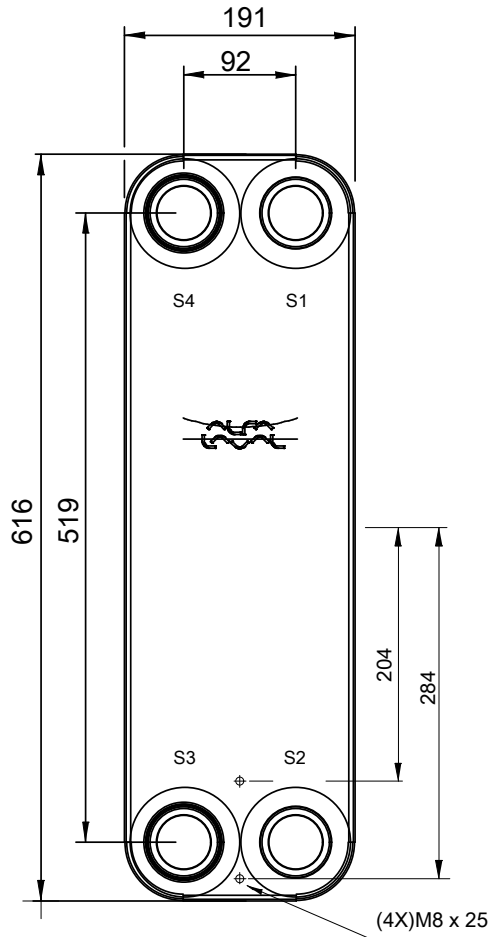
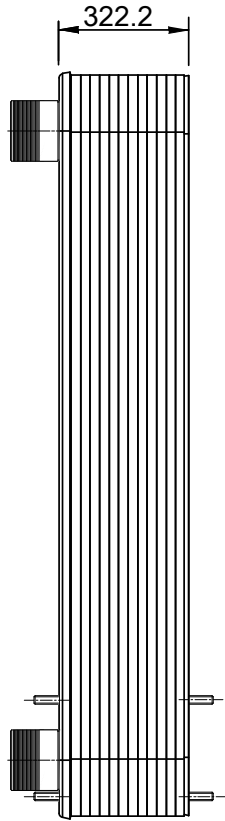
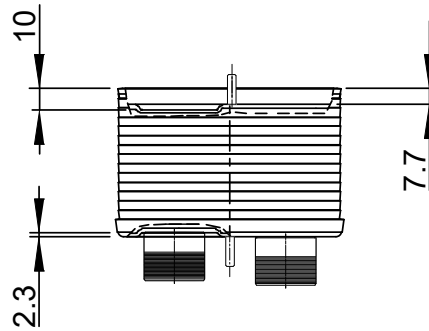
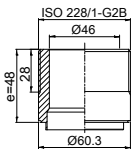


Note that all unique customer requirements (i.e tolerance) need to be verified thru Alfa Laval.



B 23  
Alloy 316  
S1,S2,S3,S4



HEATING SURFACE  
NETWEIGHT 58.9 kg  
OPERATING WEIGHT  
PLATE MATERIAL Alloy 316  
PLATE GROUPING 1\*59H/1\*60H

ALL DIMENSIONS IN MILLIMETERS

| SIDE | MEDIA | INLET | TEMP. | OUTLET | TEMP. | FLOW RATE | PRESSURE DROP | LIQUID VOL.          |
|------|-------|-------|-------|--------|-------|-----------|---------------|----------------------|
| 1    |       |       |       |        |       |           |               | 12.4 dm <sup>3</sup> |
| 2    |       |       |       |        |       |           |               | 12.6 dm <sup>3</sup> |

PRESSURE VESSEL APPROVAL

PED

CB110-120H (3287101563)

www.alfalaval.com

CUSTOMER NAME / REF. NO.

TOTAL LENGTH 395.2 mm  
TOTAL WIDTH 191.0 mm  
TOTAL HEIGHT 616.0 mm

COMPANY / REF.



8/24/2017  
REV 0