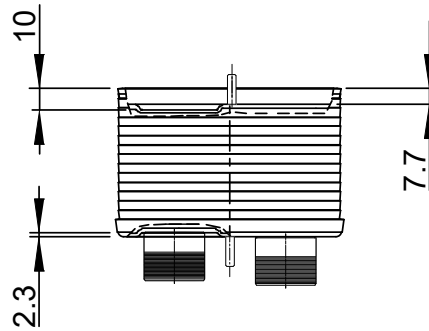
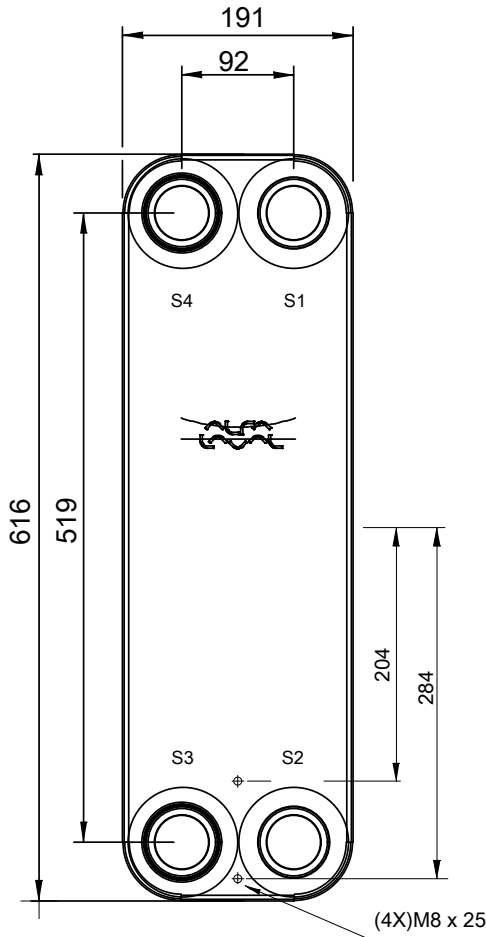
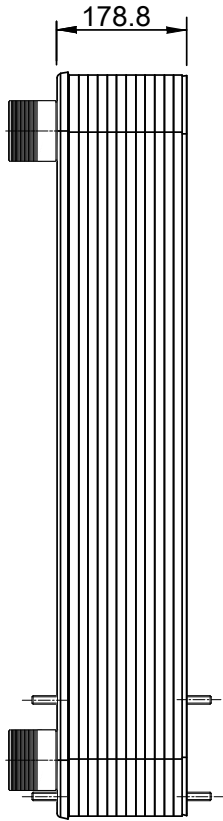
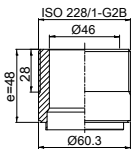


Note that all unique customer requirements (i.e tolerance) need to be verified thru Alfa Laval.

B 23  
Alloy 316  
S1,S2,S3,S4



HEATING SURFACE  
NETWEIGHT 36.3 kg  
OPERATING WEIGHT  
PLATE MATERIAL Alloy 316  
PLATE GROUPING 1\*31H/1\*32H

ALL DIMENSIONS IN MILLIMETERS

| SIDE | MEDIA | INLET | TEMP. | OUTLET | TEMP. | FLOW RATE | PRESSURE DROP | LIQUID VOL.          |
|------|-------|-------|-------|--------|-------|-----------|---------------|----------------------|
| 1    |       |       |       |        |       |           |               | 6.51 dm <sup>3</sup> |
| 2    |       |       |       |        |       |           |               | 6.72 dm <sup>3</sup> |

PRESSURE VESSEL APPROVAL

PED

CB110-64H (3287101560)

www.alfalaval.com

CUSTOMER NAME / REF. NO.

TOTAL LENGTH 251.8 mm  
TOTAL WIDTH 191.0 mm  
TOTAL HEIGHT 616.0 mm

COMPANY / REF.



8/24/2017  
REV 0