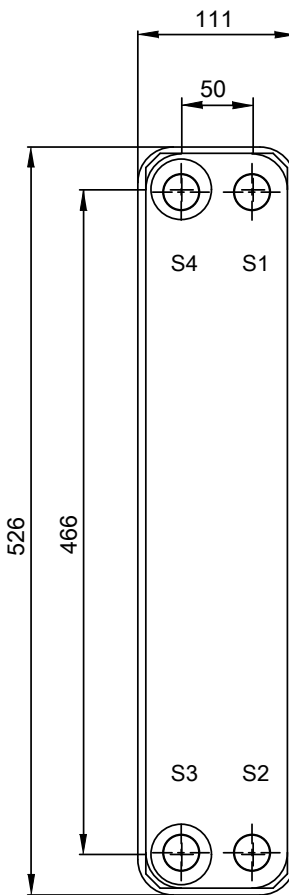
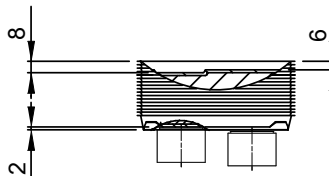
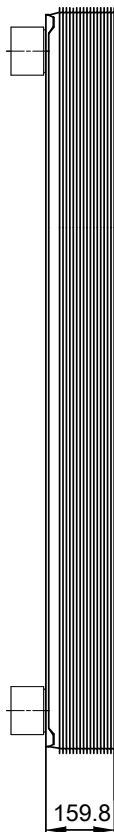
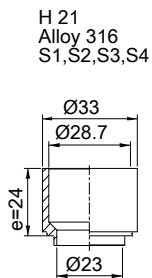


Note that all unique customer requirements (i.e tolerance) need to be verified thru Alfa Laval.



HEATING SURFACE
NETWEIGHT 15.6 kg
OPERATING WEIGHT
PLATE MATERIAL Alloy 316
PLATE GROUPING 1*29H/1*30H

Frameplate is depressed 2 mm at connection S3/S4
Pressureplate is depressed 2 mm / even number of channel plates
att connections T3/T4 / uneven number of channel plates att
connections T1/T2.

T1 T2 T3 T4 locations on back side
correspond to S1 S2 S3 S4 on front side

ALL DIMENSIONS IN MILLIMETERS

SIDE	MEDIA	INLET	TEMP.	OUTLET	TEMP.	FLOW RATE	PRESSURE DROP	LIQUID VOL.
1								2.75 dm³
2								2.85 dm³

PRESSURE VESSEL APPROVAL

PED/CRN

AlfaNova 52-60H S52 (3287001003)

www.alfalaval.com

CUSTOMER NAME / REF. NO.

TOTAL LENGTH 183.8 mm
TOTAL WIDTH 111.0 mm
TOTAL HEIGHT 526.0 mm

COMPANY / REF.



8/24/2017
REV 0