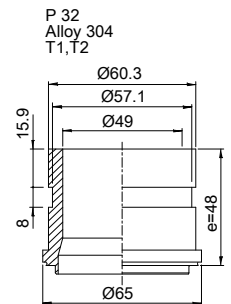
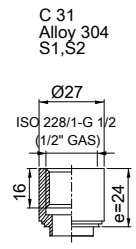
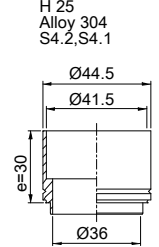
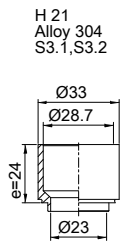
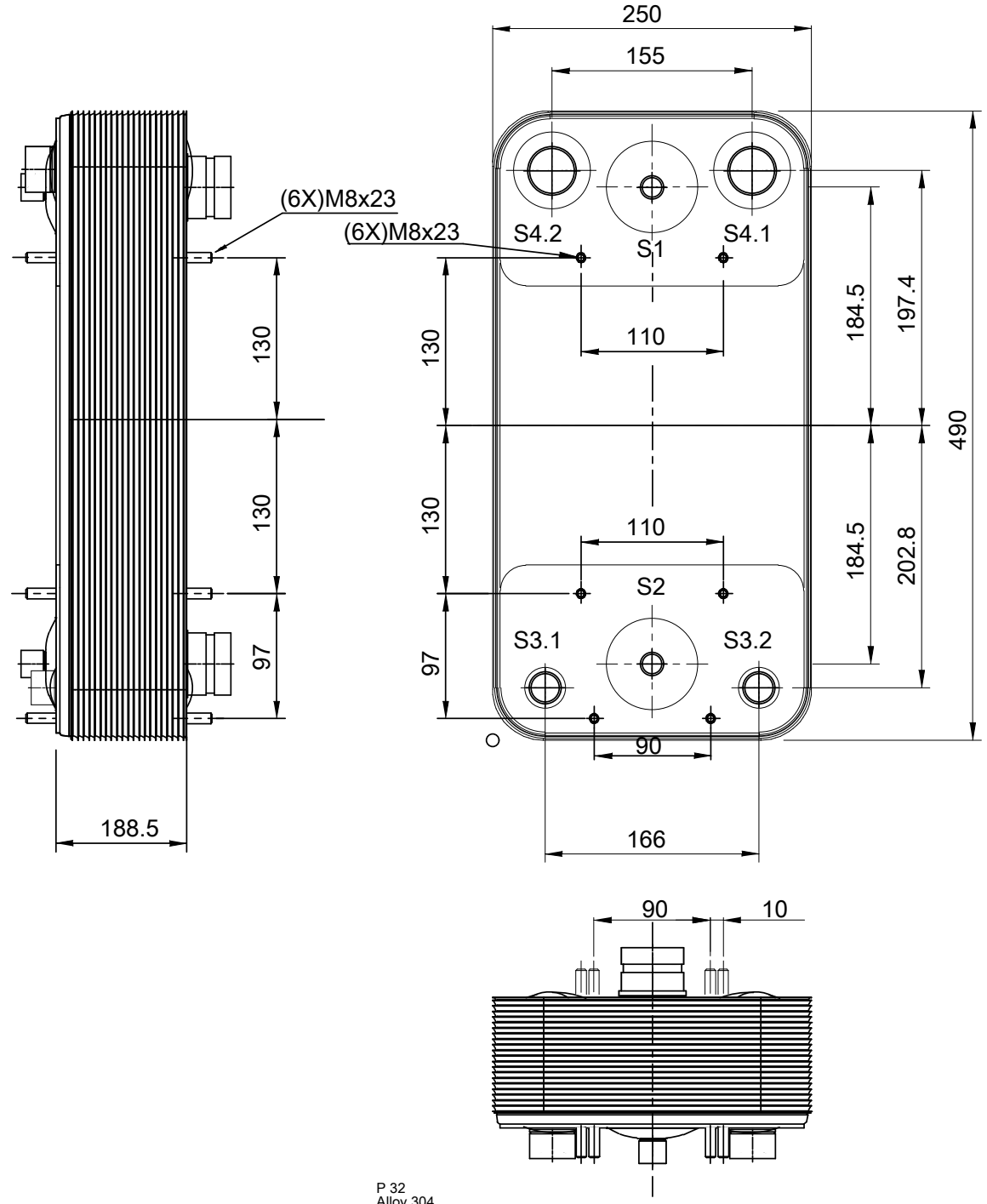


T1 T2 T3.1 T3.2 T4.1 T4.2 locations on back side correspond to S1 S2 S3.1 S3.2 S4.1 S4.2 on front side

Note that all unique customer requirements (i.e tolerance) need to be verified thru Alfa Laval.



HEATING SURFACE  
 NETWEIGHT 37.9 kg  
 OPERATING WEIGHT  
 PLATE MATERIAL Alloy 316  
 PLATE GROUPING 1\*40HR/1\*41HB



ALL DIMENSIONS IN MILLIMETERS

SIDE	MEDIA	INLET	TEMP.	OUTLET	TEMP.	FLOW RATE	PRESSURE DROP	LIQUID VOL.
1								4 dm <sup>3</sup>
2								4/4 dm <sup>3</sup>

**ALFA LAVAL**  
 PRESSURE VESSEL APPROVAL PED  
 AC-230DQ-82H (3287069856)

www.alfalaval.com

CUSTOMER NAME / REF. NO.	TOTAL LENGTH 264.5 mm	TOTAL WIDTH 250.0 mm	TOTAL HEIGHT 490.0 mm
COMPANY / REF.			
			3/24/2017 REV 0