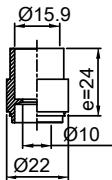
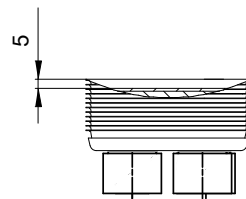
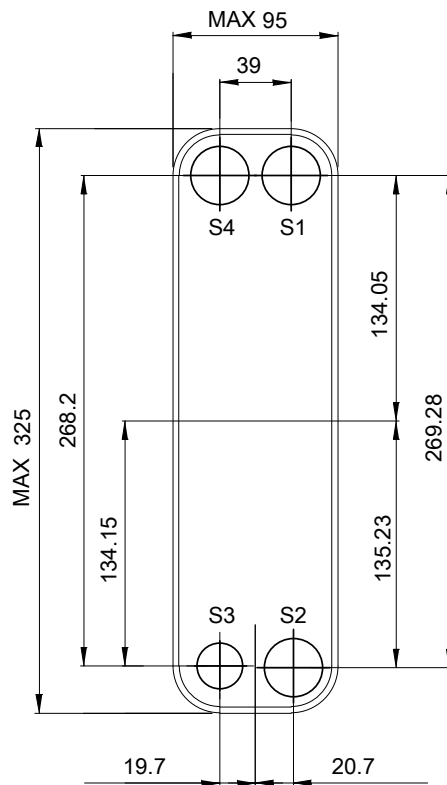
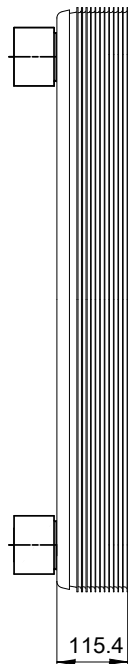
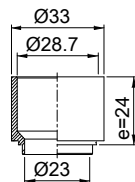


Note that all unique customer requirements (i.e tolerance) need to be verified thru Alfa Laval.

H 66
Alloy 304
S3



H 41
Alloy 304
S1,S2,S4



Frameplate is depressed 1.2 mm at connection S4
Pressureplate is depressed 1.2 mm / even number of channel
plates at connections T4 / uneven number of channel plates at
connections T1.
T1 T2 T3 T4 locations on back side
correspond to S1 S2 S3 S4 on front side

HEATING SURFACE
NETWEIGHT 7.52 kg
OPERATING WEIGHT
PLATE MATERIAL Alloy 316
PLATE GROUPING 1*34H/1*35H

ALL DIMENSIONS IN MILLIMETERS

SIDE	MEDIA	INLET	TEMP.	OUTLET	TEMP.	FLOW RATE	PRESSURE DROP	LIQUID VOL.
1								0.95 dm³
2								0.98 dm³



PRESSURE VESSEL APPROVAL
AC-30EQ-70H S21 (3287061352)

UL

www.alfalaval.com

CUSTOMER NAME / REF. NO.

COMPANY / REF.

TOTAL LENGTH 139.4 mm
TOTAL WIDTH 95.0 mm
TOTAL HEIGHT 325.0 mm

4/11/2017
REV 0