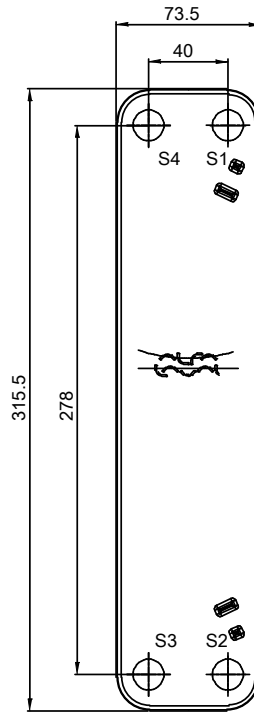
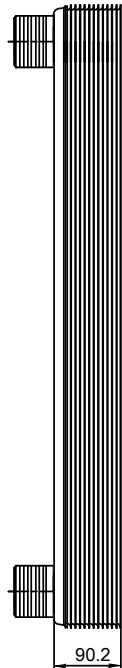
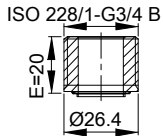
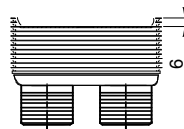


Note that all unique customer requirements (i.e tolerance) need to be verified thru Alfa Laval.

Z31  
Alloy 316  
S1,S2,S3,S4



T1 T2 T3 T4 locations on back side correspond to S1 S2 S3 S4 on front side



HEATING SURFACE  
NETWEIGHT 3.08 kg  
OPERATING WEIGHT  
PLATE MATERIAL Alloy 316  
PLATE GROUPING 1\*19H/1\*19H

ALL DIMENSIONS IN MILLIMETERS

SIDE	MEDIA	INLET	TEMP.	OUTLET	TEMP.	FLOW RATE	PRESSURE DROP	LIQUID VOL.
1								0.72 dm³
2								0.72 dm³

PRESSURE VESSEL APPROVAL PED

CBH18-39H (3287101629)

[www.alfalaval.com](http://www.alfalaval.com)

CUSTOMER NAME / REF. NO.

TOTAL LENGTH 110.2 mm  
TOTAL WIDTH 73.5 mm  
TOTAL HEIGHT 315.5 mm

COMPANY / REF.

8/24/2017  
REV 0