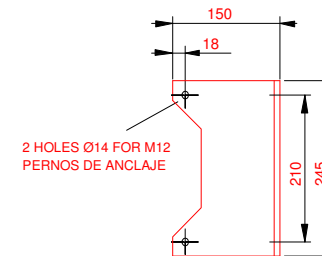
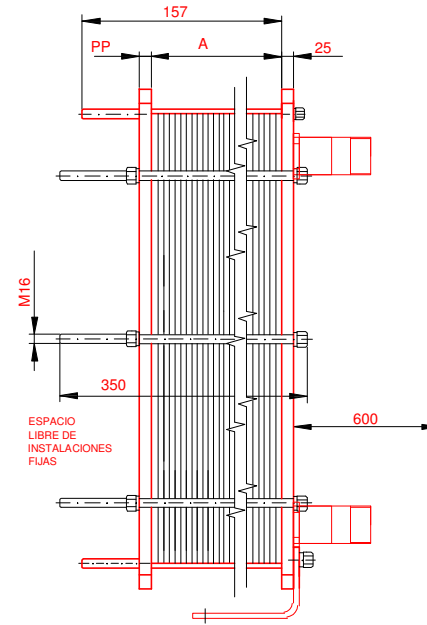
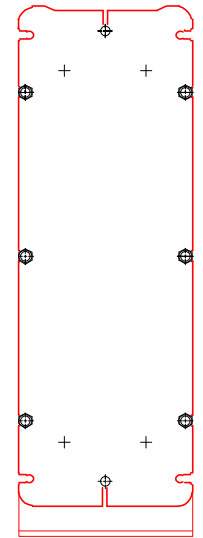
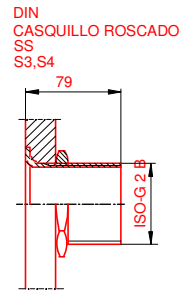
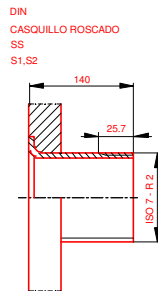
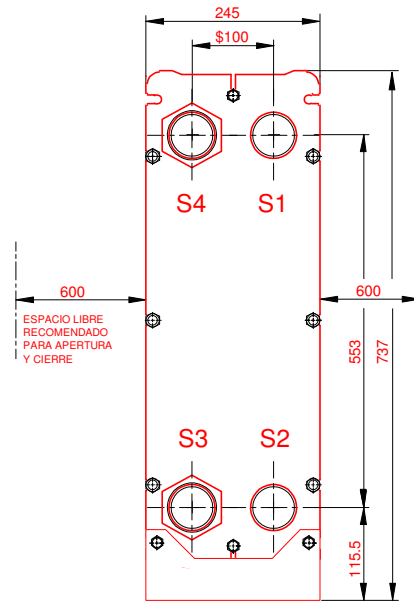


PLACA PRESION
(MOVIBLE)
SECTION A-A
PP = 20



PLACA DE BASTIDOR
(FIJO)



NOTAS:
PRESION PRUEBA 6,5 bar LADO 1 6,5 bar LADO 2
PRESIÓN DISEÑO 5 bar 5 bar
TEMP. MAXIMA 55 °C 50 °C
TEMP. MIN. 0 °C 0 °C

JUNTA NBRP Clip-on
MAT. DE PLACAS ALLOY 316
ESPESOR PLACAS 0,40 mm

PESO CON AGUA 86 kg

CAPACIDAD CALORIFICA 90 kW

DIMENSIONES EN MILÍMETROS

Do not use this drawing for foundation bolting or piping layout.

LARGO 317
ANCHO 245
ALTO 737

LADO	FLUIDO	F.D.G.	ENTRADA	TEMP.	SALIDA	TEMP.	CAUDAL	PERDIDA-CARGA
1	30.0% Prop.glycol	2	S1	55.0 °C	S2	45.0 °C	8.2 m³/h	18.87 kPa
2	Water	2	S3	40.0 °C	S4	50.0 °C	7.8 m³/h	16.38 kPa

INTERCAMBIADOR DE CALOR DE PLACAS

T5-BFG

PED



ACS Solar 55-45°C 50°C HVA

AGENTE / REF.

CAT. RIESGO 0

FECHA 2016-09-28

REV. Nº 0

ORDEN INTERNA

CANERIA

DIBUJO 90 kW

CLIENTE / REF.

REALIZADO