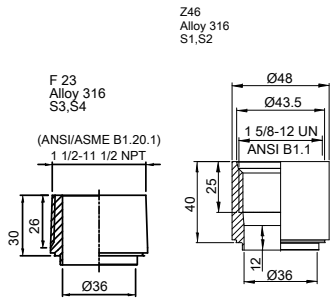
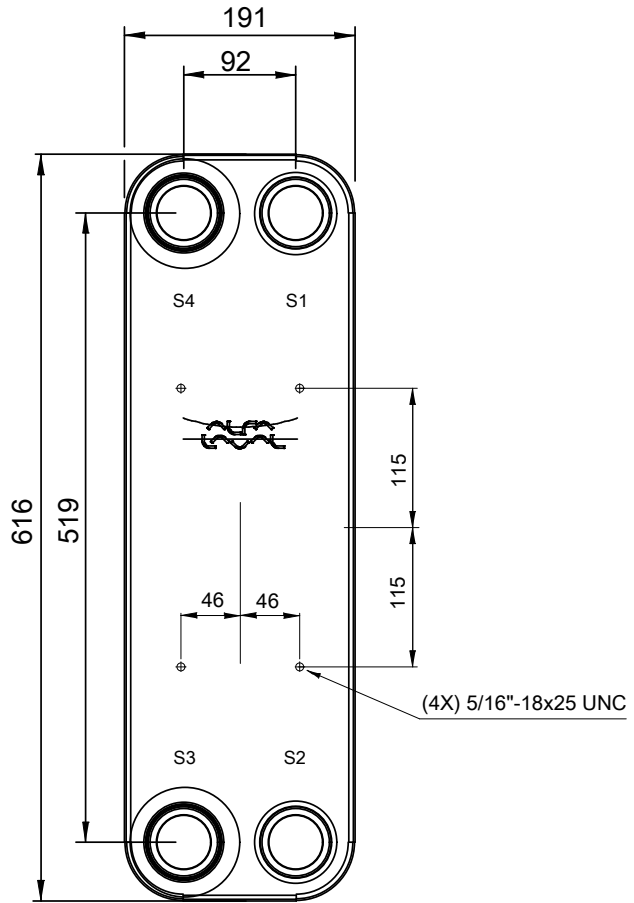
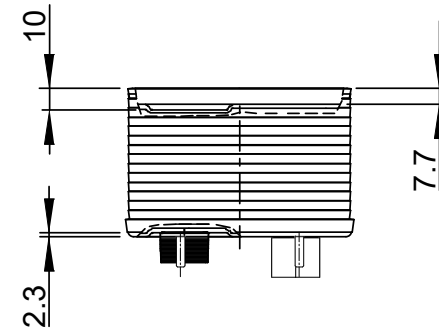
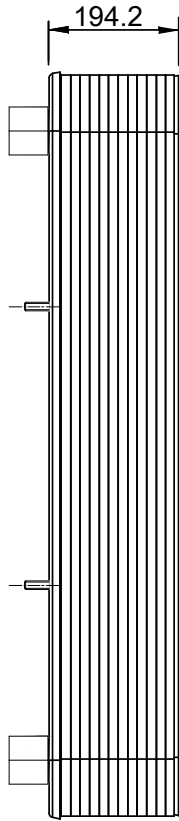


Note that all unique customer requirements (i.e tolerance) need to be verified thru Alfa Laval.



Z46  
Alloy 316  
S1, S2



HEATING SURFACE  
NETWEIGHT 38.0 kg  
OPERATING WEIGHT  
PLATE MATERIAL Alloy 316  
PLATE GROUPING 1\*34H/1\*35H

ALL DIMENSIONS IN MILLIMETERS

SIDE	MEDIA	INLET	TEMP.	OUTLET	TEMP.	FLOW RATE	PRESSURE DROP	LIQUID VOL.
1								7.14 dm <sup>3</sup>
2								7.35 dm <sup>3</sup>

PRESSURE VESSEL APPROVAL

UL/CRN

CB110-70H N03 (3287128190)

www.alfalaval.com

CUSTOMER NAME / REF. NO.

TOTAL LENGTH 234.2 mm  
TOTAL WIDTH 191.0 mm  
TOTAL HEIGHT 616.0 mm

COMPANY / REF.

12/11/2017  
REV 0