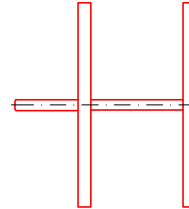
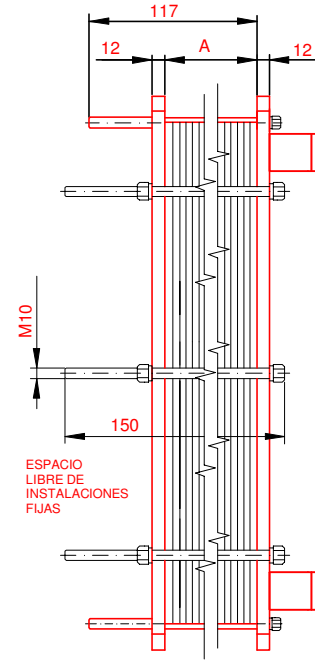
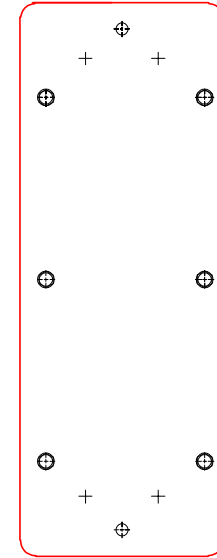
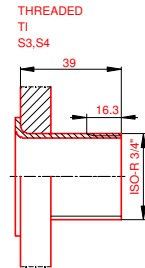
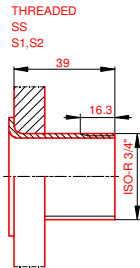
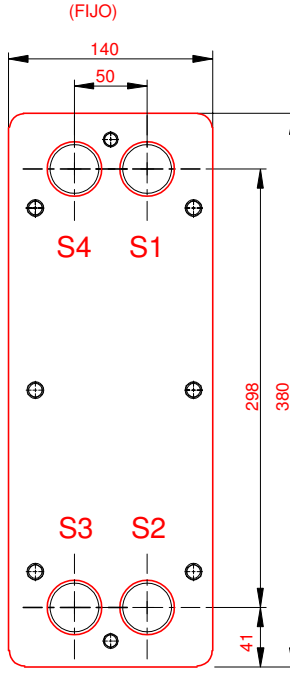


PLACA PRESION
(MOVIBLE)
SECTION A-A



PLACA DE BASTIDOR



NOTAS:
 LADO 1 LADO 2
 PRESION PRUEBA 6,5 bar 6,5 bar
 PRESION DISEÑO 5 bar 5 bar
 TEMP. MAXIMA 80 °C 35 °C
 TEMP. MIN. 0 °C 0 °C
 JUNTA NBRP Clip-on
 MAT. DE PLACAS TI
 ESPESOR PLACAS 0,50 mm
 PESO CON AGUA 17 kg
 CAPACIDAD CALORIFICA 20 kW

DIMENSIONES EN MILÍMETROS


Do not use this drawing for foundation bolting or piping layout.

LARGO 165
 ANCHO 140
 ALTO 380

LADO	FLUIDO	F.D.G.	ENTRADA	TEMP.	SALIDA	TEMP.	CAUDAL	PERDIDA-CARGA
1	Water		S1	80.0 °C	S2	60.0 °C	0.9 m³/h	44.06 kPa
2	Water		S3	15.0 °C	S4	32.0 °C	1.0 m³/h	30.64 kPa

ORDEN INTERNA	CANERIA	DIBUJO
		20KW
AGENTE / REF.		
CLIENTE / REF.		
REALIZADO	CAT. RIESGO	
	N/A	

INTERCAMBIADOR DE CALOR DE PLACAS
T2-BFG
 ALS



PISCAL caldera 80-60°C HVAC
 FECHA 2016-09-28
 REV. Nº 0