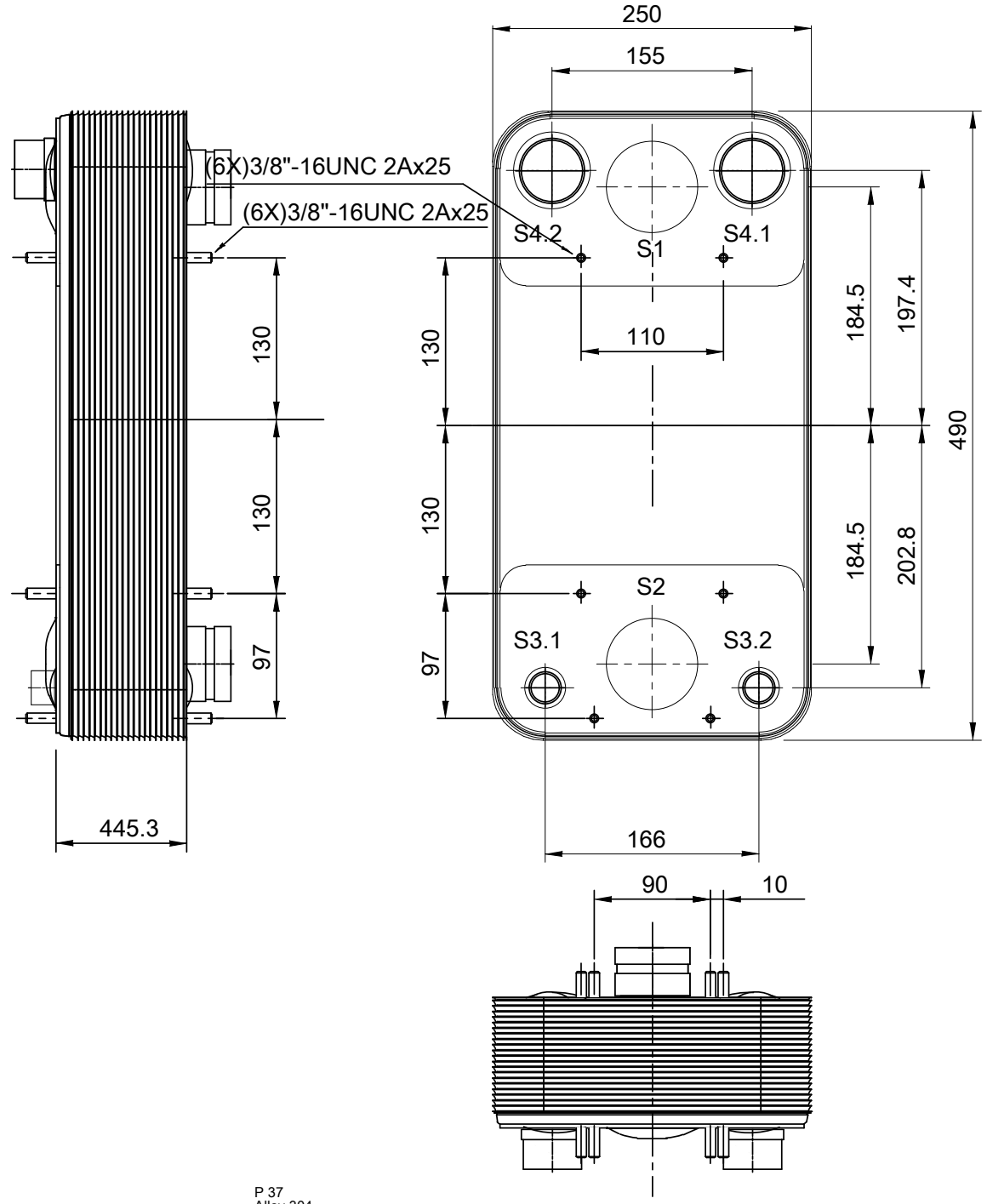
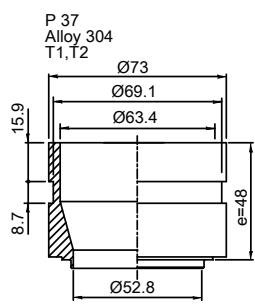
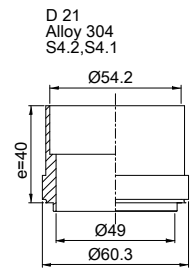
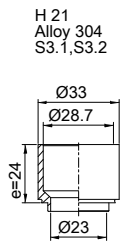


T1 T2 T3.1 T3.2 T4.1 T4.2 locations on back side correspond to S1 S2 S3.1 S3.2 S4.1 S4.2 on front side

Note that all unique customer requirements (i.e tolerance) need to be verified thru Alfa Laval.



HEATING SURFACE
 NETWEIGHT 86.2 kg
 OPERATING WEIGHT
 PLATE MATERIAL Alloy 316
 PLATE GROUPING 1*100HR/1*101HB

ALL DIMENSIONS IN MILLIMETERS

| SIDE | MEDIA | INLET | TEMP. | OUTLET | TEMP. | FLOW RATE | PRESSURE DROP | LIQUID VOL. |
|------|-------|-------|-------|--------|-------|-----------|---------------|-----------------------|
| 1 | | | | | | | | 10 dm ³ |
| 2 | | | | | | | | 10/10 dm ³ |

PRESSURE VESSEL APPROVAL UL/CRN
 ACH-230DQ-202H Y74 (3287084574)

www.alfalaval.com

| | | |
|--------------------------|--------------|----------|
| CUSTOMER NAME / REF. NO. | TOTAL LENGTH | 529.3 mm |
| COMPANY / REF. | TOTAL WIDTH | 250.0 mm |
| | TOTAL HEIGHT | 490.0 mm |

3/15/2017
 REV 0