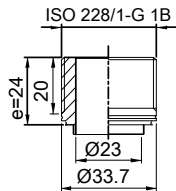
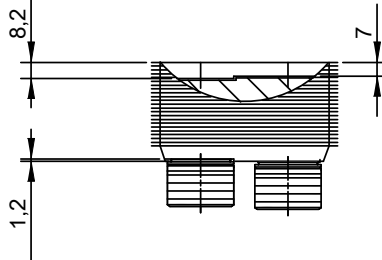
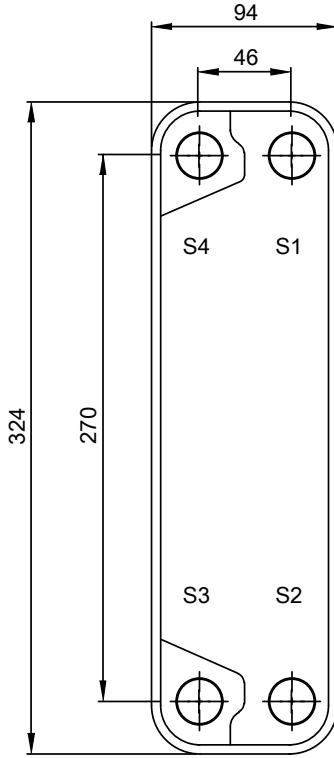
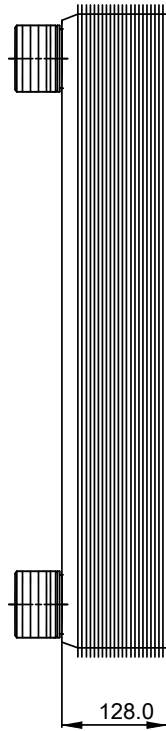


Note that all unique customer requirements (i.e tolerance) need to be verified thru Alfa Laval.



B 21  
Alloy 316  
S1,S2,S3,S4



Frameplate is depressed 1.2 mm at connection S3/S4  
Pressureplate is depressed 1.2 mm / even number of channel  
plates at connections T3/T4 / uneven number of channel plates at  
connections T1/T2.

HEATING SURFACE  
NETWEIGHT 7.56 kg  
OPERATING WEIGHT  
PLATE MATERIAL Alloy 316  
PLATE GROUPING 1\*39H/1\*40H

T1 T2 T3 T4 locations on back side  
correspond to S1 S2 S3 S4 on front side

ALL DIMENSIONS IN MILLIMETERS

SIDE	MEDIA	INLET	TEMP.	OUTLET	TEMP.	FLOW RATE	PRESSURE DROP	LIQUID VOL.
1								1.09 dm <sup>3</sup>
2								1.12 dm <sup>3</sup>

PRESSURE VESSEL APPROVAL

PED

CB20-80H (3287000019)

www.alfalaval.com

CUSTOMER NAME / REF. NO.

TOTAL LENGTH 150.8 mm  
TOTAL WIDTH 94.0 mm  
TOTAL HEIGHT 324.0 mm

COMPANY / REF.

8/24/2017  
REV 0