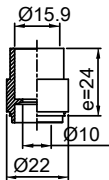
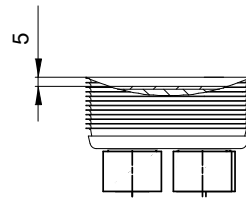
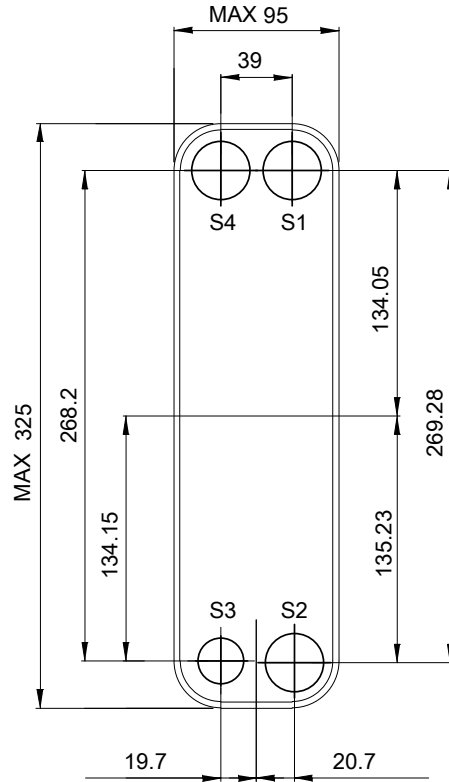
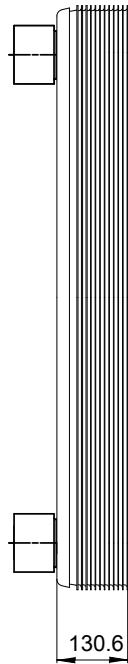
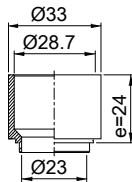


Note that all unique customer requirements (i.e tolerance) need to be verified thru Alfa Laval.

H 66  
Alloy 304  
S3



H 41  
Alloy 304  
S1,S2,S4



Frameplate is depressed 1.2 mm at connection S4  
Pressureplate is depressed 1.2 mm / even number of channel  
plates at connections T4 / uneven number of channel plates at  
connections T1.  
T1 T2 T3 T4 locations on back side  
correspond to S1 S2 S3 S4 on front side

HEATING SURFACE  
NETWEIGHT 8.30 kg  
OPERATING WEIGHT  
PLATE MATERIAL Alloy 316  
PLATE GROUPING 1\*39H/1\*40H

ALL DIMENSIONS IN MILLIMETERS

SIDE	MEDIA	INLET	TEMP.	OUTLET	TEMP.	FLOW RATE	PRESSURE DROP	LIQUID VOL.
1								1.09 dm <sup>3</sup>
2								1.12 dm <sup>3</sup>

PRESSURE VESSEL APPROVAL UL

AC-30EQ-80H S21 (3287061353)

www.alfalaval.com

CUSTOMER NAME / REF. NO.

TOTAL LENGTH 154.6 mm  
TOTAL WIDTH 95.0 mm  
TOTAL HEIGHT 325.0 mm

COMPANY / REF.

4/11/2017  
REV 0