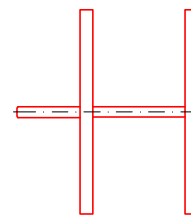
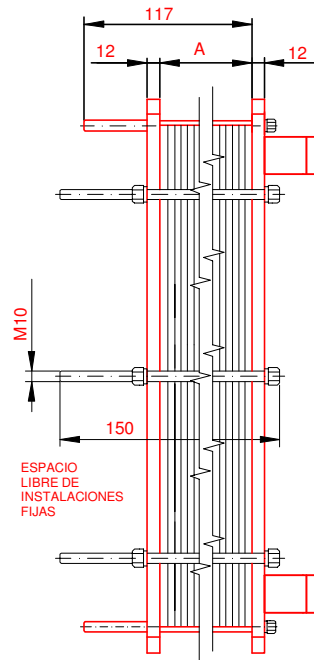
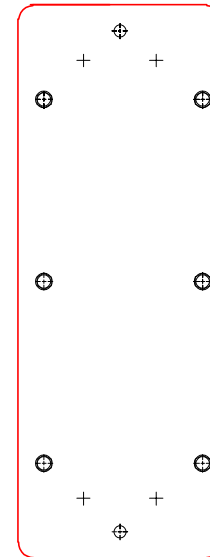


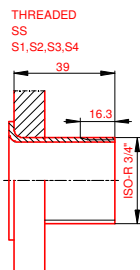
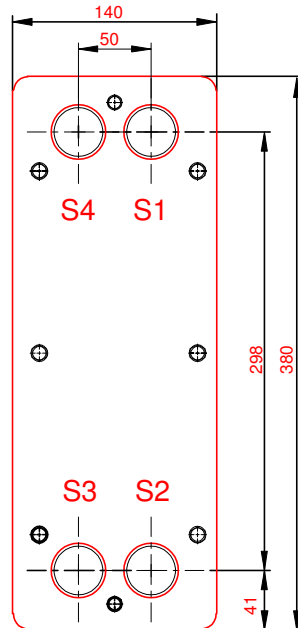
PLACA PRESION

(MOVIBLE)
SECTION A-A



PLACA DE BASTIDOR

(FIJO)



NOTAS:
 PRESION PRUEBA 6,5 bar
 PRESION DISEÑO 5 bar
 TEMP. MAXIMA 55 °C
 TEMP. MIN. 0 °C

LADO 1 LADO 2
 JUNTA MAT. DE PLACAS NBRP Clip-on
 ESPESOR PLACAS ALLOY 316
 0.50 mm


PESO CON AGUA 19 kg
 CAPACIDAD CALORIFICA 15 kW

ORDEN INTERNA	CANERIA	DIBUJO
		15 kW
AGENTE / REF.		
CLIENTE / REF.		
REALIZADO		
CAT. RIESGO		N/A

INTERCAMBIADOR DE CALOR DE PLACAS

T2-BFG

ALS



ACS Solar 55-45°C 45°C HVA

FECHA 2016-09-28

REV. 0

DIMENSIONES EN MILÍMETROS

Do not use this drawing for foundation bolting or piping layout.

LARGO	165
ANCHO	140
ALTO	380

LADO	FLUIDO	F.D.G.	ENTRADA	TEMP.	SALIDA	TEMP.	CAUDAL	PERDIDA-CARGA
1	30.0% Prop.glycol		S1	55.0 °C	S2	45.0 °C	1.4 m³/h	9.793 kPa
2	Water		S3	35.0 °C	S4	45.0 °C	1.3 m³/h	10.48 kPa