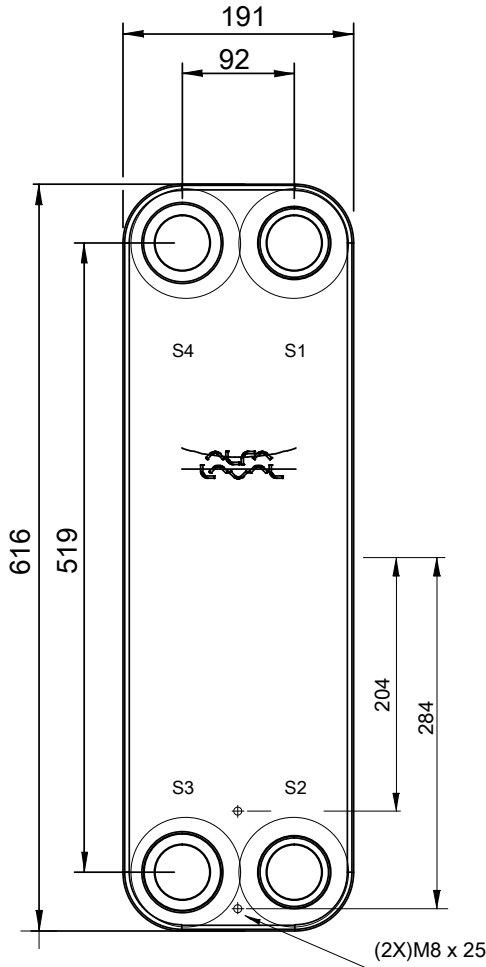
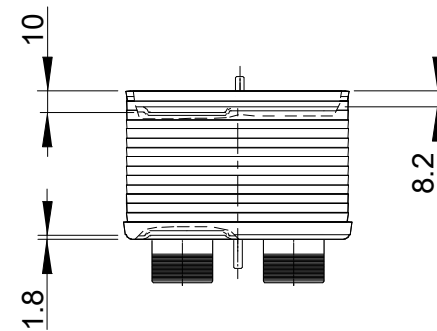
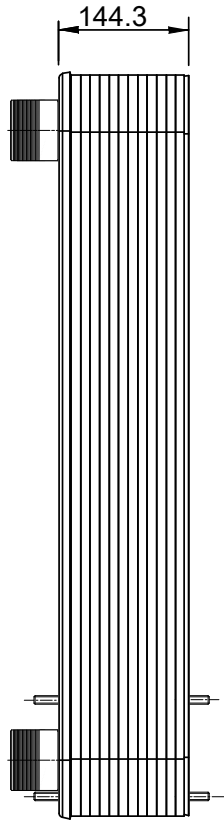
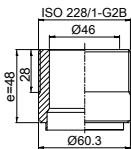


Note that all unique customer requirements (i.e tolerance) need to be verified thru Alfa Laval.

B 23  
Alloy 316  
S1, S2, S3, S4



T1 T2 T3 T4 locations on back side correspond to S1 S2 S3 S4 on front side

HEATING SURFACE  
NETWEIGHT 35.6 kg  
OPERATING WEIGHT  
PLATE MATERIAL Alloy 316  
PLATE GROUPING 1\*30ML/1\*31MH

ALL DIMENSIONS IN MILLIMETERS

| SIDE | MEDIA | INLET | TEMP. | OUTLET | TEMP. | FLOW RATE | PRESSURE DROP | LIQUID VOL.          |
|------|-------|-------|-------|--------|-------|-----------|---------------|----------------------|
| 1    |       |       |       |        |       |           |               | 5.4 dm <sup>3</sup>  |
| 2    |       |       |       |        |       |           |               | 5.58 dm <sup>3</sup> |

PRESSURE VESSEL APPROVAL

PED

CB112-62M (3287131322)

www.alfalaval.com

CUSTOMER NAME / REF. NO.

TOTAL LENGTH 217.3 mm  
TOTAL WIDTH 191.0 mm  
TOTAL HEIGHT 616.0 mm

COMPANY / REF.



8/24/2017  
REV 0