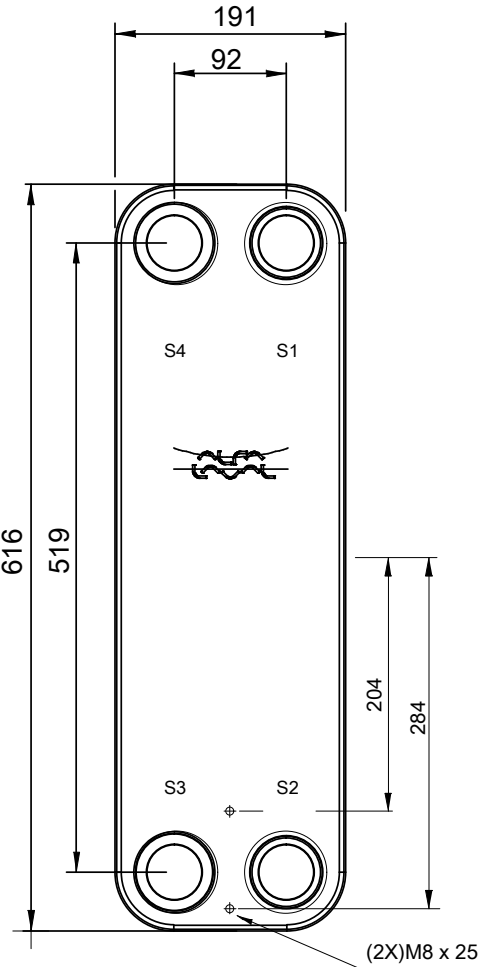
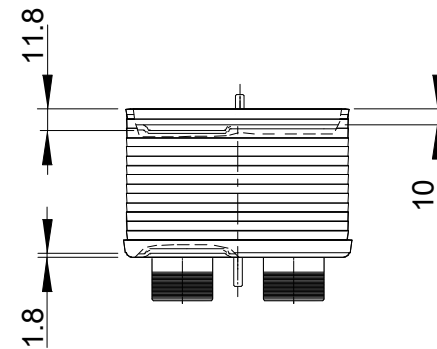
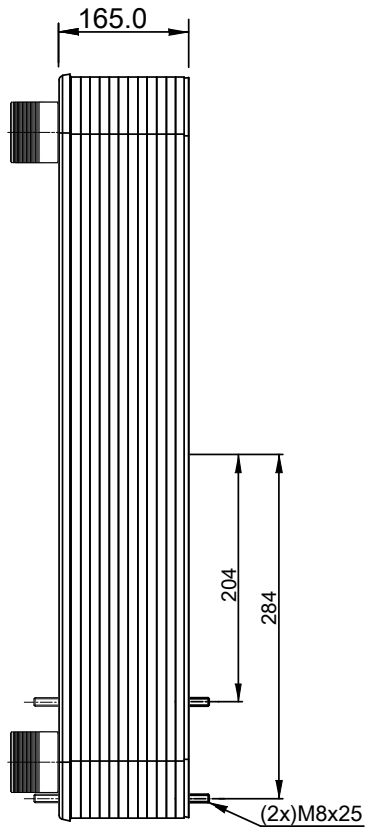
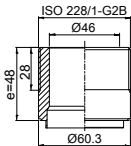


Note that all unique customer requirements (i.e tolerance) need to be verified thru Alfa Laval.

B 23  
ALLOY 316  
S1,S2,S3,S4



T1 T2 T3 T4 locations on back side correspond to S1 S2 S3 S4 on front side

HEATING SURFACE m<sup>2</sup>  
NETWEIGHT 31.6 kg  
OPERATING WEIGHT kg  
PLATE MATERIAL ALLOY 316  
PLATE GROUPING 1\*35H/1\*36H

ALL DIMENSIONS IN MILLIMETERS

SIDE	MEDIA	INLET	TEMP.	OUTLET	TEMP.	FLOW RATE	PRESSURE DROP	LIQUID VOL.
1	Water	S1	°C	S2	°C	kg/h	kPa	6.5 dm <sup>3</sup>
2	Water	S3	°C	S4	°C	kg/h	kPa	6.3 dm <sup>3</sup>

PRESSURE VESSEL APPROVAL

PED

CB112-72H (3287117052)

www.alfalaval.com

CUSTOMER NAME / REF. NO.

TOTAL LENGTH 232 mm  
TOTAL WIDTH 191 mm  
TOTAL HEIGHT 616 mm

COMPANY / REF.  
Alfa Laval Nordic AB



12/1/2018  
REV 0