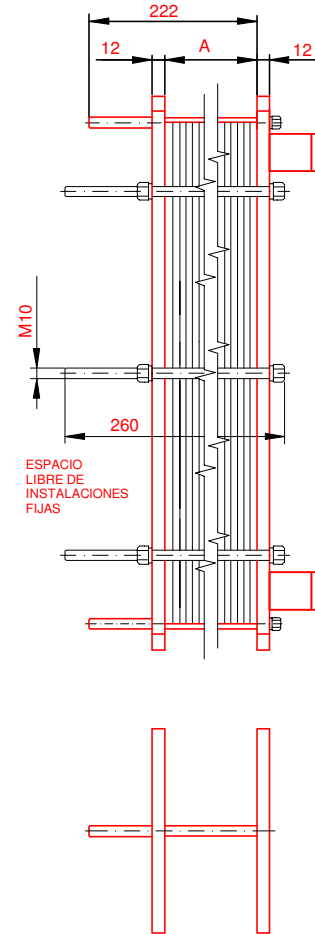
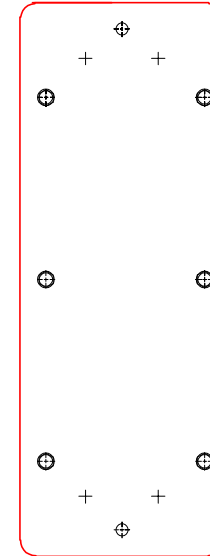
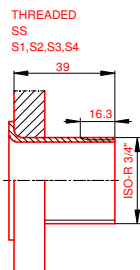
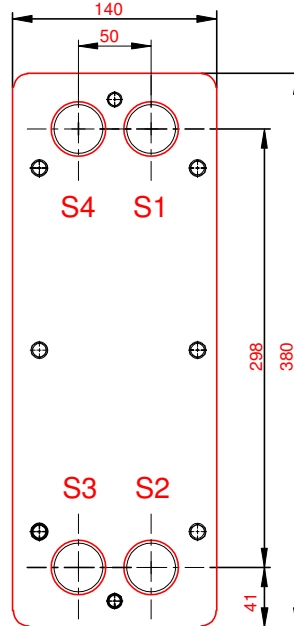


PLACA PRESION
(MOVIBLE)
SECTION A-A



PLACA DE BASTIDOR
(FIJO)



NOTAS:
 PRESION PRUEBA 6,5 bar
 PRESION DISEÑO 5 bar
 TEMP. MAXIMA 55 °C
 TEMP. MIN. 0 °C

LADO 1 LADO 2
 JUNTA MAT. DE PLACAS NBRP Clip-on
 ESPESOR PLACAS ALLOY 316
 0.50 mm

PESO CON AGUA 22 kg

CAPACIDAD CALORIFICA 30 kW

DIMENSIONES EN MILÍMETROS

Do not use this drawing for foundation bolting or piping layout.

LARGO 275
 ANCHO 140
 ALTO 380


| LADO | FLUIDO | F.D.G. | ENTRADA | TEMP. | SALIDA | TEMP. | CAUDAL | PERDIDA-CARGA |
|------|-------------------|--------|---------|---------|--------|---------|----------|---------------|
| 1 | 30.0% Prop.glycol | | S1 | 55.0 °C | S2 | 45.0 °C | 2.7 m³/h | 15.70 kPa |
| 2 | Water | | S3 | 35.0 °C | S4 | 45.0 °C | 2.6 m³/h | 13.69 kPa |

| | | |
|----------------|-------------|--------|
| ORDEN INTERNA | CANERIA | DIBUJO |
| | | 30 kW |
| AGENTE / REF. | | |
| CLIENTE / REF. | | |
| REALIZADO | CAT. RIESGO | N/A |

INTERCAMBIADOR DE CALOR DE PLACAS

T2-BFG

ALS



ACS Solar 55-45°C 45°C HVA

FECHA 2016-09-28

REV. 0