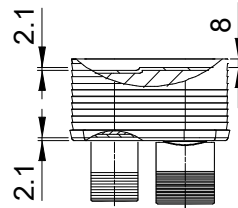
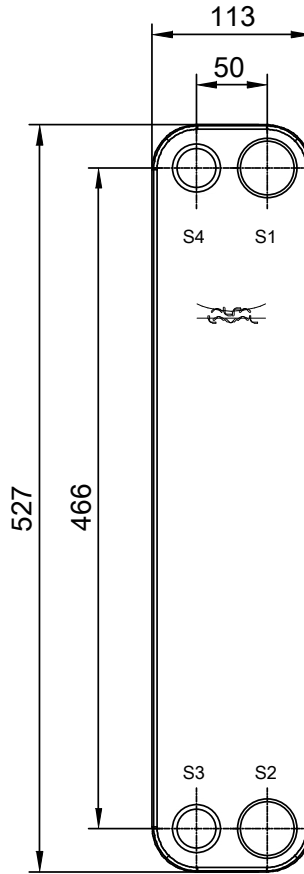
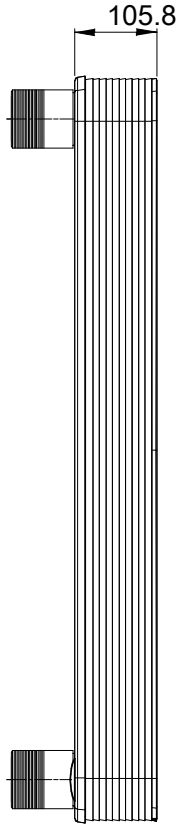
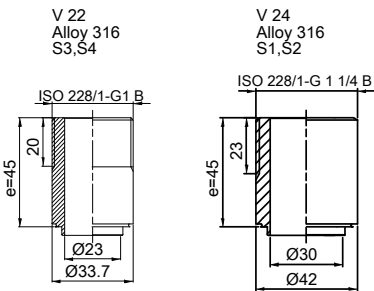


Note that all unique customer requirements (i.e tolerance) need to be verified thru Alfa Laval.



Frameplate is depressed 2.1 mm at connections S3 and S4 if holed.
Pressureplate is depressed 2.1 mm at connections T3 and T4 if holed.



HEATING SURFACE
NETWEIGHT 10.3 kg
OPERATING WEIGHT
PLATE MATERIAL Alloy 316
PLATE GROUPING 1*19L/1*20L

ALL DIMENSIONS IN MILLIMETERS

| SIDE | MEDIA | INLET | TEMP. | OUTLET | TEMP. | FLOW RATE | PRESSURE DROP | LIQUID VOL. |
|------|-------|-------|-------|--------|-------|-----------|---------------|----------------------|
| 1 | | | | | | | | 1.96 dm ³ |
| 2 | | | | | | | | 2.06 dm ³ |

PRESSURE VESSEL APPROVAL

PED

CB60AQ-40L (3287167805)

www.alfalaval.com

CUSTOMER NAME / REF. NO.

COMPANY / REF.

TOTAL LENGTH 150.8 mm
TOTAL WIDTH 113.0 mm
TOTAL HEIGHT 527.0 mm



5/12/2017
REV 0