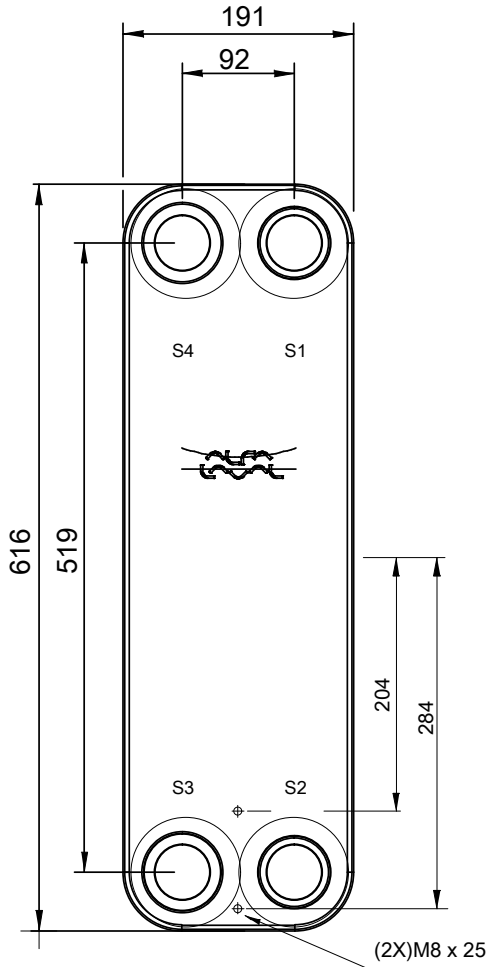
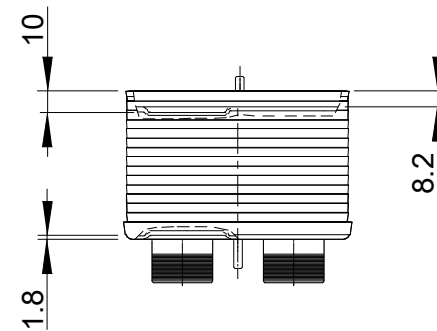
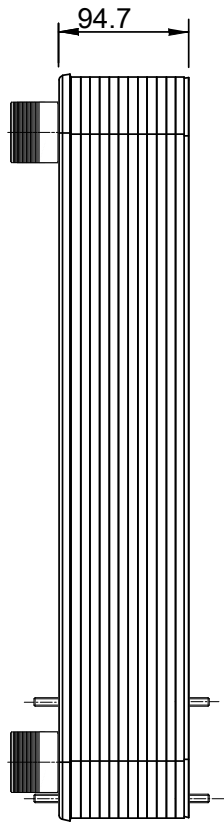
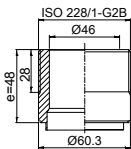


Note that all unique customer requirements (i.e tolerance) need to be verified thru Alfa Laval.

B 23
Alloy 316
S1, S2, S3, S4



HEATING SURFACE
NETWEIGHT 27.2 kg
OPERATING WEIGHT
PLATE MATERIAL Alloy 316
PLATE GROUPING 1*18H/1*19H

T1 T2 T3 T4 locations on back side correspond to S1 S2 S3 S4 on front side

ALL DIMENSIONS IN MILLIMETERS

| SIDE | MEDIA | INLET | TEMP. | OUTLET | TEMP. | FLOW RATE | PRESSURE DROP | LIQUID VOL. |
|------|-------|-------|-------|--------|-------|-----------|---------------|----------------------|
| 1 | | | | | | | | 3.24 dm ³ |
| 2 | | | | | | | | 3.42 dm ³ |

PRESSURE VESSEL APPROVAL

PED

CB112-38H (3287147921)

www.alfalaval.com

CUSTOMER NAME / REF. NO.

TOTAL LENGTH 167.7 mm
TOTAL WIDTH 191.0 mm
TOTAL HEIGHT 616.0 mm

COMPANY / REF.



8/24/2017
REV 0