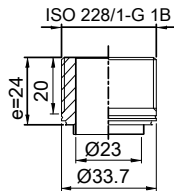
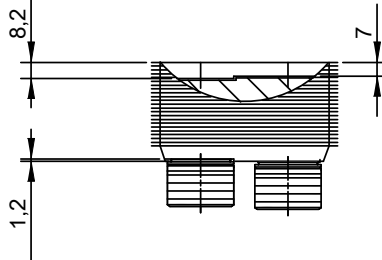
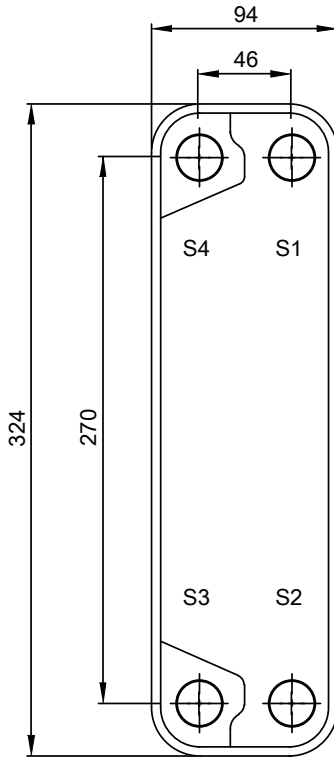
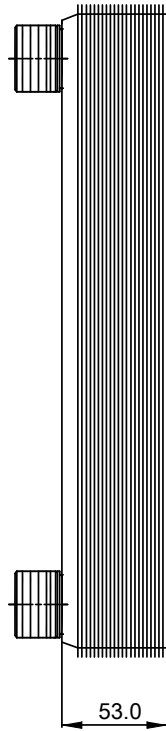


Note that all unique customer requirements (i.e tolerance) need to be verified thru Alfa Laval.



B 21  
Alloy 316  
S1,S2,S3,S4



HEATING SURFACE  
NETWEIGHT 3.56 kg  
OPERATING WEIGHT  
PLATE MATERIAL Alloy 316  
PLATE GROUPING 1\*14H/1\*15H

Frameplate is depressed 1.2 mm at connection S3/S4  
Pressureplate is depressed 1.2 mm / even number of channel  
plates at connections T3/T4 / uneven number of channel plates at  
connections T1/T2.

T1 T2 T3 T4 locations on back side  
correspond to S1 S2 S3 S4 on front side

ALL DIMENSIONS IN MILLIMETERS

SIDE	MEDIA	INLET	TEMP.	OUTLET	TEMP.	FLOW RATE	PRESSURE DROP	LIQUID VOL.
1								0.39 dm <sup>3</sup>
2								0.42 dm <sup>3</sup>

PRESSURE VESSEL APPROVAL

PED

CB20-30H (3287000015)

www.alfalaval.com

CUSTOMER NAME / REF. NO.

TOTAL LENGTH 75.8 mm  
TOTAL WIDTH 94.0 mm  
TOTAL HEIGHT 324.0 mm

COMPANY / REF.

8/24/2017  
REV 0